

## Product datasheet for CS810482

### Tissue FFPE Sections, Endometriotic tissue

#### Product data:

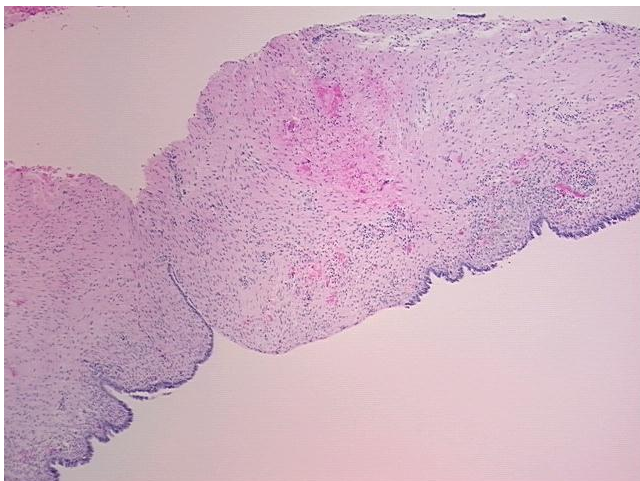
Product Type:	FFPE Sections
Disease State:	Other Disease
Diagnosis Category:	Endometriosis
Tissue:	Endometriotic tissue
Frozen Sample ID:	PA000082E4
Case ID:	CU0000011126
Tissue of Origin:	Endometriotic tissue
Site of Finding:	Ovary
Appearance:	L
Sample Diagnosis (from Pathology Verification):	Endometriosis
Normal:	85%
Lesional:	15%
Tumor:	0%
Tumor Hypo/Acellular Stroma:	0%
Tumor Hypercellular Stroma:	0%
Necrosis:	0%
Pathology Verification notes from H&E review:	30% ovarian stroma, 50% hilar vessel, 20% serosal adipose tissue; lesion is endometriosis with 10% glandular epithelium, 5% fibrous stroma
CASE Diagnosis (from medical center path report):	Endometriosis
Age:	32
Gender:	Female
Storage:	Store FFPE tissue sections at +4°C.



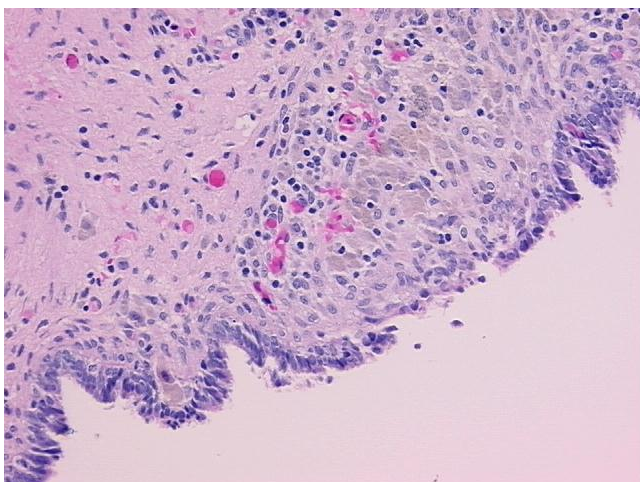
[View online »](#)

Stability: All FFPE tissue sections are stable for 1 year from date of purchase.

**Product images:**



4x Image



20x Image