

## Product datasheet for **CS810323**

### Tissue FFPE Sections, Stomach

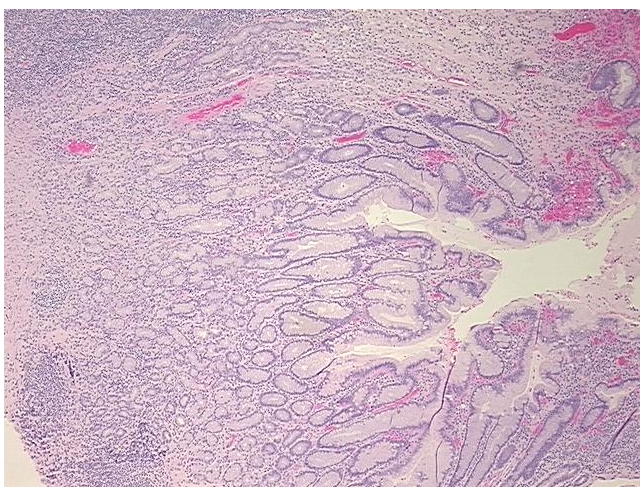
#### Product data:

Product Type:	FFPE Sections
Disease State:	Other Disease
Diagnosis Category:	Gastritis
Tissue:	Stomach
Frozen Sample ID:	PA0F3355AF
Case ID:	CU0000011095
Tissue of Origin:	Stomach
Site of Finding:	Stomach
Appearance:	L
Sample Diagnosis (from Pathology Verification):	Gastritis, chronic
Normal:	0%
Lesional:	100%
Tumor:	0%
Tumor Hypo/Acellular Stroma:	0%
Tumor Hypercellular Stroma:	0%
Necrosis:	0%
Pathology Verification notes from H&E review:	Inflammation: Moderate Lymphoplasmacytic infiltrate; Non Tumor Structures: 20% Mucosa, 10% Submucosa, 70% Muscle
CASE Diagnosis (from medical center path report):	Adenocarcinoma of stomach, signet ring cell
Age:	52
Gender:	Female
Tumor Grade:	AJCC G3: Poorly differentiated

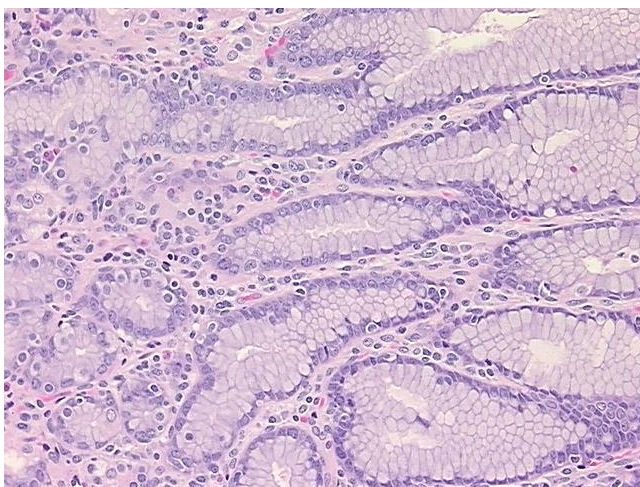


[View online »](#)

Minimum Stage Grouping:	II
T (Extent of Primary Tumor):	T2
N (Lymph node metastasis):	N1
M (Distant metastasis):	MX
Diagnostic Test Results:	Cytokeratin AE1/AE3 ~ AE1/AE3 ! by IHC, Reported as Performed or Reviewed
Storage:	Store FFPE tissue sections at +4°C.
Stability:	All FFPE tissue sections are stable for 1 year from date of purchase.

**Product images:**

4x Image



20x Image