

Product datasheet for **CS810305**

Tissue FFPE Sections, Lung

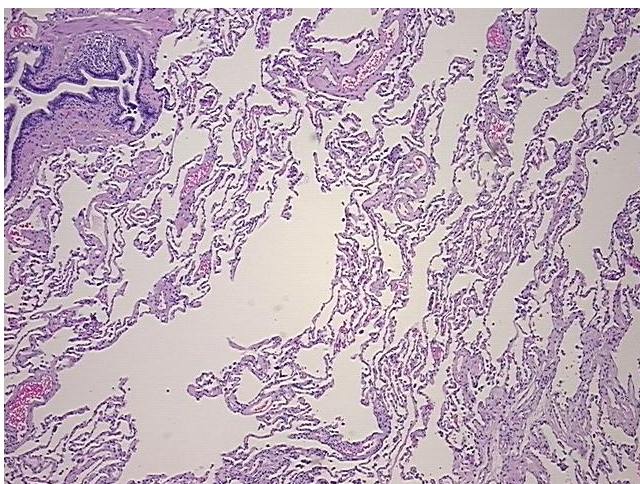
Product data:

Product Type:	FFPE Sections
Disease State:	Other Disease
Diagnosis Category:	Chronic Obstructive Pulmonary Disease (COPD)
Tissue:	Lung
Frozen Sample ID:	PA15477D51
Case ID:	CU0000011093
Tissue of Origin:	Lung
Site of Finding:	Lung
Appearance:	L
Sample Diagnosis (from Pathology Verification):	Emphysema
Normal:	70%
Lesional:	30%
Tumor:	0%
Tumor Hypo/Acellular Stroma:	0%
Tumor Hypercellular Stroma:	0%
Necrosis:	0%
Pathology Verification notes from H&E review:	Non Tumor Structures: 80% Alveoli, 10% Bronchioles, 10% Fibrovascular septa
CASE Diagnosis (from medical center path report):	Tumor of lung, carcinoid
Age:	52
Gender:	Female
Tumor Grade:	AJCC G1: Well differentiated

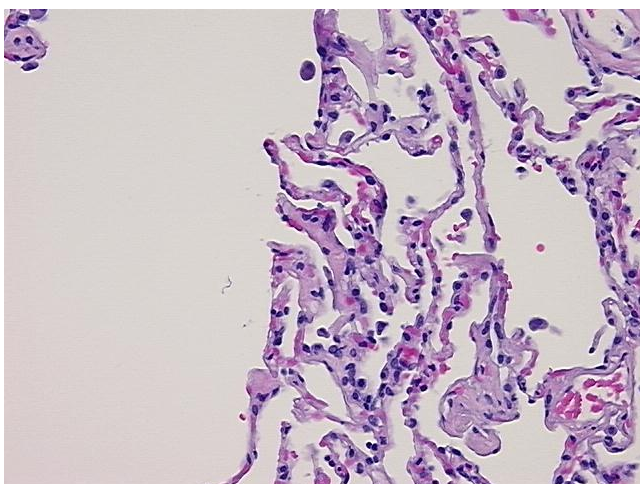


[View online »](#)

Minimum Stage Grouping:	IA
T (Extent of Primary Tumor):	T1
N (Lymph node metastasis):	N0
M (Distant metastasis):	MX
Diagnostic Test Results:	Synaptophysin ~ SYN ! by IHC,Positive; Chromogranin A ~ Parathyroid secretory protein 1 ! by IHC,Positive
Storage:	Store FFPE tissue sections at +4°C.
Stability:	All FFPE tissue sections are stable for 1 year from date of purchase.

Product images:

4x Image



20x Image