

## Product datasheet for **CS810252**

### Tissue FFPE Sections, Endometriotic tissue

#### Product data:

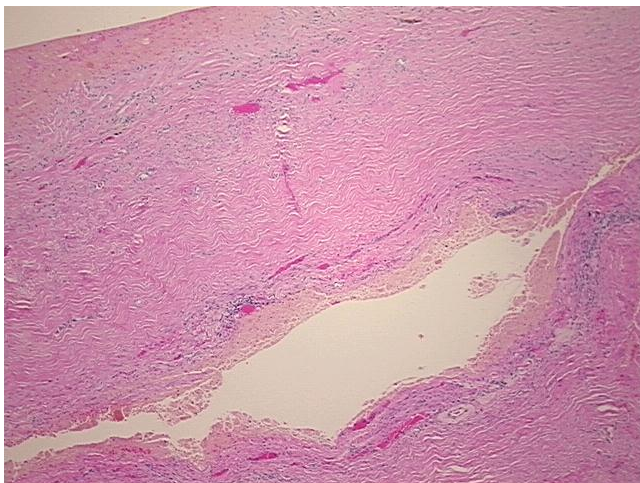
Product Type:	FFPE Sections
Disease State:	Other Disease
Diagnosis Category:	Cysts
Tissue:	Ovary
Frozen Sample ID:	PA00007755
Case ID:	CU0000011080
Tissue of Origin:	Endometriotic tissue
Site of Finding:	Ovary: left
Appearance:	L
Sample Diagnosis (from Pathology Verification):	Cyst of ovary, endometrial
Normal:	50%
Lesional:	50%
Tumor:	0%
Tumor Hypo/Acellular Stroma:	0%
Tumor Hypercellular Stroma:	0%
Necrosis:	0%
Pathology Verification notes from H&E review:	normal: 100% ovarian stroma
CASE Diagnosis (from medical center path report):	Cyst of ovary, endometrial
Age:	42
Gender:	Female
Storage:	Store FFPE tissue sections at +4°C.



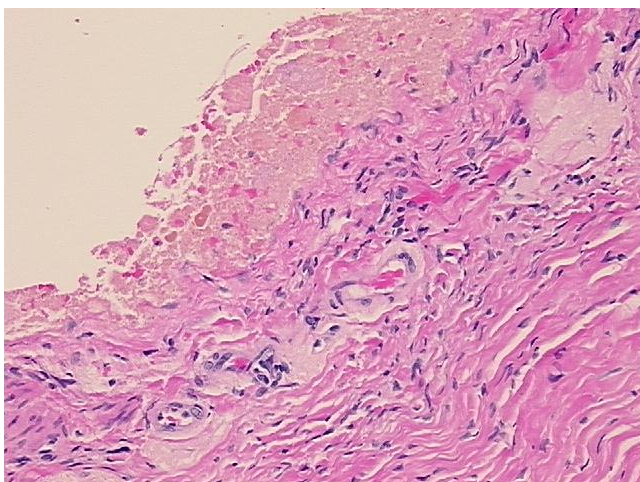
[View online »](#)

Stability: All FFPE tissue sections are stable for 1 year from date of purchase.

**Product images:**



4x Image



20x Image