

## Product datasheet for **CS810251**

### Tissue FFPE Sections, Endometriotic tissue

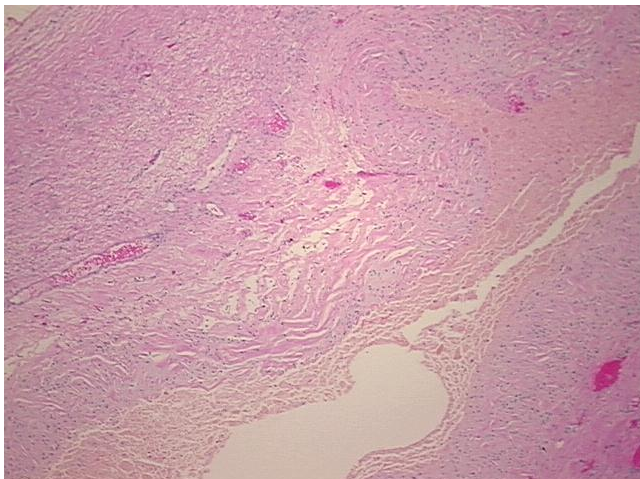
#### Product data:

Product Type:	FFPE Sections
Disease State:	Other Disease
Diagnosis Category:	Cysts
Tissue:	Ovary
Frozen Sample ID:	PA00007754
Case ID:	CU0000011080
Tissue of Origin:	Endometriotic tissue
Site of Finding:	Ovary: left
Appearance:	L
Sample Diagnosis (from Pathology Verification):	Cyst of ovary, endometrial
Normal:	20%
Lesional:	80%
Tumor:	0%
Tumor Hypo/Acellular Stroma:	0%
Tumor Hypercellular Stroma:	0%
Necrosis:	0%
CASE Diagnosis (from medical center path report):	Cyst of ovary, endometrial
Age:	42
Gender:	Female
Storage:	Store FFPE tissue sections at +4°C.
Stability:	All FFPE tissue sections are stable for 1 year from date of purchase.

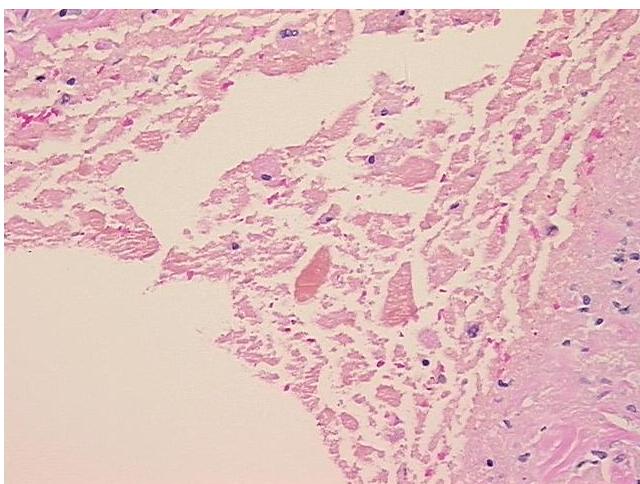


[View online »](#)

Product images:



4x Image



20x Image