

## Product datasheet for **CS810148**

### Tissue FFPE Sections, Vagina

#### Product data:

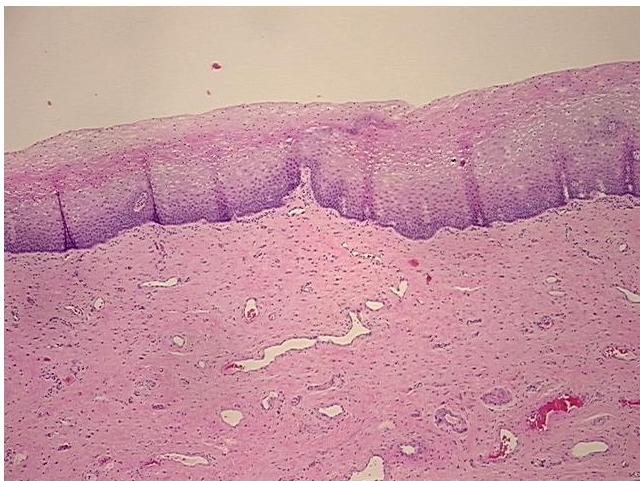
|   |   |
|---|---|
| Product Type:                                     | FFPE Sections                                   |
| Disease State:                                    | Other Disease                                   |
| Diagnosis Category:                               | Keratosis                                       |
| Tissue:   | Vagina  |
| Frozen Sample ID:                                 | PA000079C3                                      |
| Case ID:  | CU0000011046                                    |
| Tissue of Origin:                                 | Vagina  |
| Site of Finding:                                  | Vagina  |
| Appearance:                                       | L   |
| Sample Diagnosis (from Pathology Verification):   | Parakeratosis                                   |
| Normal:   | 95%   |
| Lesional:   | 5%  |
| Tumor:  | 0%  |
| Tumor Hypo/Acellular Stroma:                      | 0%  |
| Tumor Hypercellular Stroma:                       | 0%  |
| Necrosis:   | 0%  |
| Pathology Verification notes from H&E review:     | Non Tumor Structures: 20% Epidermis, 80% Dermis |
| CASE Diagnosis (from medical center path report): | Parakeratosis                                   |
| Age:  | 55  |
| Gender:   | Female  |
| Storage:  | Store FFPE tissue sections at +4°C.             |



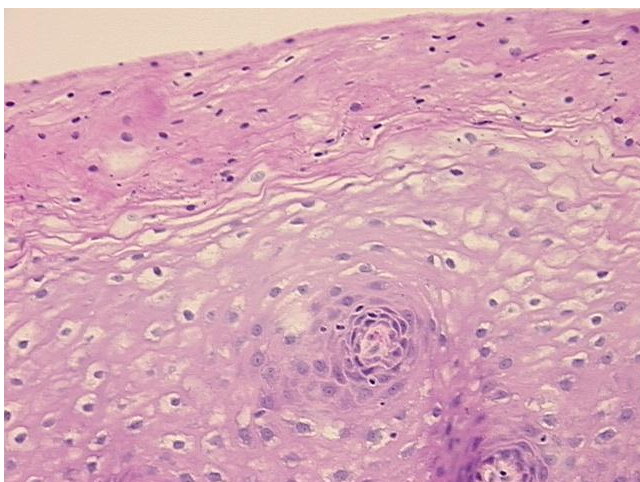
[View online »](#)

Stability: All FFPE tissue sections are stable for 1 year from date of purchase.

**Product images:**



4x Image



20x Image