

## Product datasheet for CS810051

### Tissue FFPE Sections, Pancreas

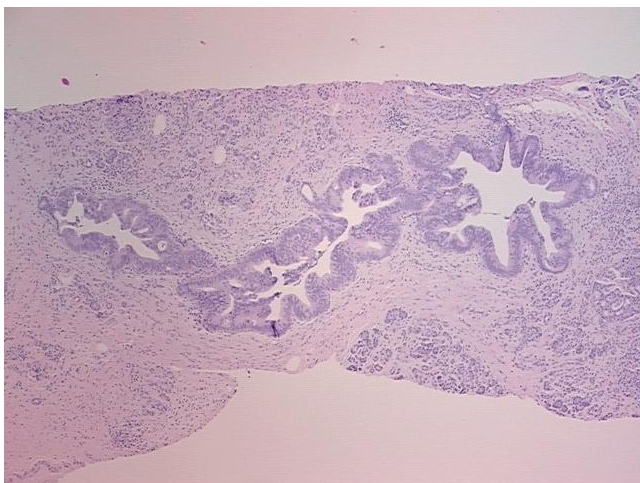
#### Product data:

Product Type:	FFPE Sections
Disease State:	Other Disease
Diagnosis Category:	Dysplasia
Tissue:	Pancreas
Frozen Sample ID:	PA00007885
Case ID:	CU0000011006
Tissue of Origin:	Pancreas
Site of Finding:	Pancreas
Appearance:	L
Sample Diagnosis (from Pathology Verification):	High grade dysplasia of pancreatic duct
Normal:	0%
Lesional:	100%
Tumor:	0%
Tumor Hypo/Acellular Stroma:	0%
Tumor Hypercellular Stroma:	0%
Necrosis:	0%
Pathology Verification notes from H&E review:	lesion: 20% high grade dysplasia of pancreatic duct; 80% chronic pancreatitis; 60% exocrine epithelium, 30% endocrine epithelium, 10% ducts
CASE Diagnosis (from medical center path report):	Adenocarcinoma of pancreas, ductal
Age:	54
Gender:	Female
Tumor Grade:	AJCC G2: Moderately differentiated

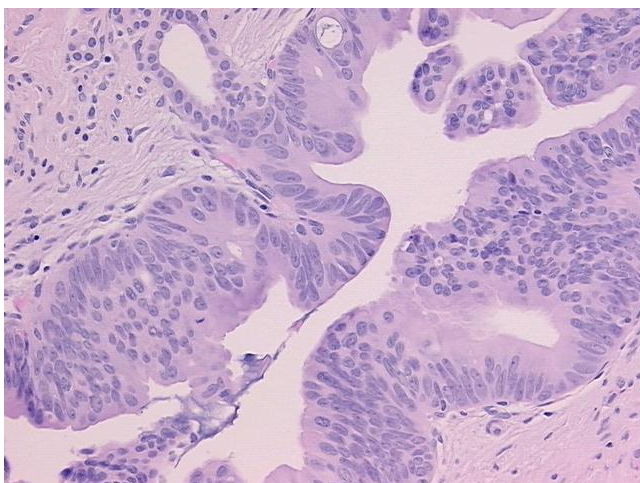


[View online »](#)

Minimum Stage Grouping:	IIA
T (Extent of Primary Tumor):	T3
N (Lymph node metastasis):	N0
M (Distant metastasis):	MX
Storage:	Store FFPE tissue sections at +4°C.
Stability:	All FFPE tissue sections are stable for 1 year from date of purchase.

**Product images:**

4x Image



20x Image