

Product datasheet for **CS809828**

Tissue FFPE Sections, Lung

Product data:

| | |
|---|--|
| Product Type: | FFPE Sections |
| Disease State: | Cancer |
| Diagnosis Category: | Lung Cancer |
| Tissue: | Lung |
| Frozen Sample ID: | PA1547728E |
| Case ID: | CU0000010508 |
| Tissue of Origin: | Lung |
| Site of Finding: | Lung |
| Appearance: | T |
| Sample Diagnosis (from Pathology Verification): | Adenocarcinoma of lung, bronchioloalveolar |
| Normal: | 60% |
| Lesional: | 0% |
| Tumor: | 20% |
| Tumor Hypo/Acellular Stroma: | 20% |
| Tumor Hypercellular Stroma: | 0% |
| Necrosis: | 0% |
| Pathology Verification notes from H&E review: | normal: 70% alveoli, 20% bronchioles, 10% fibrovascular stroma |
| CASE Diagnosis (from medical center path report): | Adenocarcinoma of lung, bronchioloalveolar |
| Age: | 54 |
| Gender: | Female |
| Tumor Grade: | AJCC G1: Well differentiated |

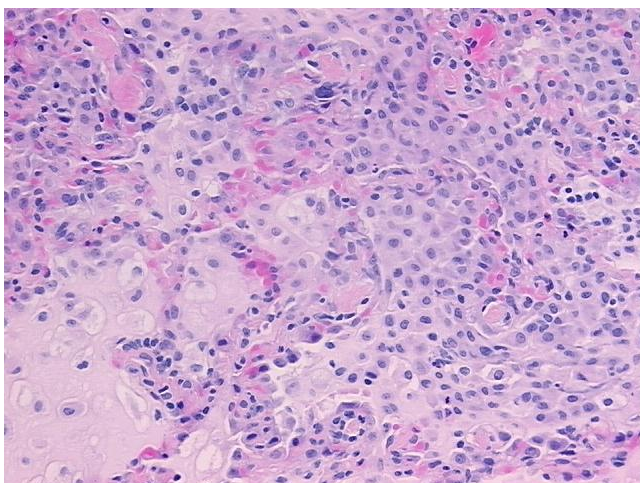


[View online »](#)

| | |
|------------------------------|---|
| Minimum Stage Grouping: | IB |
| T (Extent of Primary Tumor): | T2 |
| N (Lymph node metastasis): | N0 |
| M (Distant metastasis): | MX |
| Storage: | Store FFPE tissue sections at +4°C. |
| Stability: | All FFPE tissue sections are stable for 1 year from date of purchase. |

Product images:

4x Image



20x Image