

## Product datasheet for **CS809819**

### Tissue FFPE Sections, Kidney

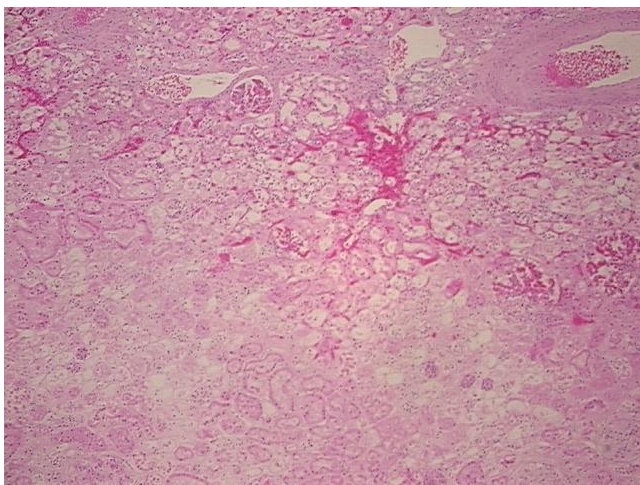
#### Product data:

|   |   |
|---|---|
| Product Type:                                     | FFPE Sections                               |
| Disease State:                                    | Other Disease                               |
| Diagnosis Category:                               | Infarction                                  |
| Tissue:   | Kidney                                      |
| Frozen Sample ID:                                 | PA11B41861                                  |
| Case ID:  | CU0000010503                                |
| Tissue of Origin:                                 | Kidney                                      |
| Site of Finding:                                  | Kidney                                      |
| Appearance:                                       | L   |
| Sample Diagnosis (from Pathology Verification):   | Infarction of kidney                        |
| Normal:   | 20%   |
| Lesional:   | 80%   |
| Tumor:  | 0%  |
| Tumor Hypo/Acellular Stroma:                      | 0%  |
| Tumor Hypercellular Stroma:                       | 0%  |
| Necrosis:   | 0%  |
| Pathology Verification notes from H&E review:     | Non Tumor Structures: 100% Cortex           |
| CASE Diagnosis (from medical center path report): | Carcinoma of kidney, renal cell, clear cell |
| Age:  | 68  |
| Gender:   | Male  |
| Tumor Grade:                                      | Fuhrman G2: Nuclei slightly irregular       |

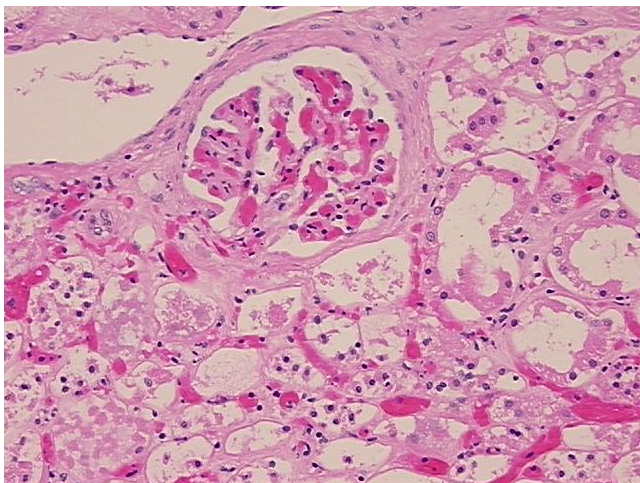


[View online »](#)

|                              |   |
|------------------------------|---|
| Minimum Stage Grouping:      | IV  |
| T (Extent of Primary Tumor): | T3  |
| N (Lymph node metastasis):   | N0  |
| M (Distant metastasis):      | M1  |
| Storage:                     | Store FFPE tissue sections at +4°C.                                   |
| Stability:                   | All FFPE tissue sections are stable for 1 year from date of purchase. |

**Product images:**

4x Image



20x Image