

Product datasheet for **CS809736**

Tissue FFPE Sections, Cervix

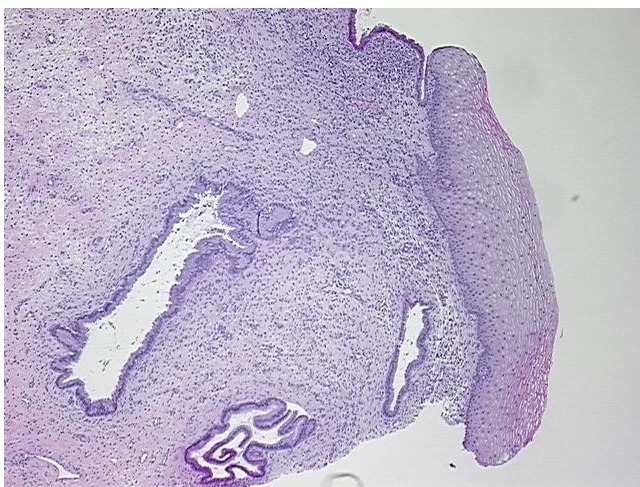
Product data:

Product Type:	FFPE Sections
Disease State:	Other Disease
Diagnosis Category:	Inflammation (various)
Tissue:	Cervix
Frozen Sample ID:	PA0000727E
Case ID:	CU0000010464
Tissue of Origin:	Cervix
Site of Finding:	Cervix
Appearance:	L
Sample Diagnosis (from Pathology Verification):	Cervicitis, chronic
Normal:	0%
Lesional:	100%
Tumor:	0%
Tumor Hypo/Acellular Stroma:	0%
Tumor Hypercellular Stroma:	0%
Necrosis:	0%
Pathology Verification notes from H&E review:	Inflammation: Mild Mixed inflammatory infiltrate; Non Tumor Structures: 10% Squamous epithelium, 10% Glandular epithelium, 80% Fibromuscular stroma; Other Features/Comments: Transformation Zone present
CASE Diagnosis (from medical center path report):	Leiomyoma of myometrium
Age:	32
Gender:	Female

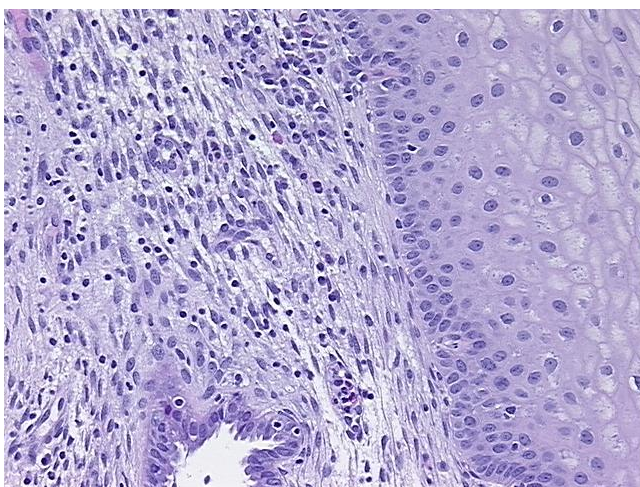


[View online »](#)

Tumor Grade:	Not Reported
Minimum Stage Grouping:	Not Reported
T (Extent of Primary Tumor):	Not Reported
N (Lymph node metastasis):	Not Reported
M (Distant metastasis):	Not Reported
Storage:	Store FFPE tissue sections at +4°C.
Stability:	All FFPE tissue sections are stable for 1 year from date of purchase.

Product images:

4x Image



20x Image