

Product datasheet for CS809536

Tissue FFPE Sections, Myelomonocytic cells

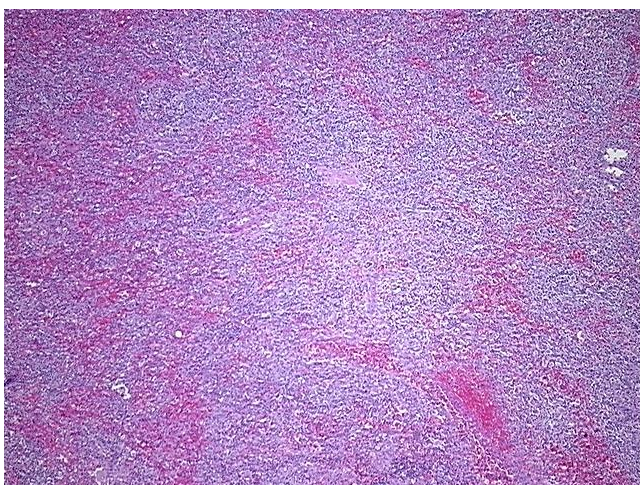
Product data:

Product Type:	FFPE Sections
Disease State:	Cancer
Diagnosis Category:	Leukemia
Tissue:	Lymphoid tissue
Frozen Sample ID:	PA1547808A
Case ID:	CU0000009323
Tissue of Origin:	Myelomonocytic cells
Site of Finding:	Spleen
Appearance:	T
Sample Diagnosis (from Pathology Verification):	Leukemia, myelomonocytic, chronic
Normal:	20%
Lesional:	0%
Tumor:	80%
Tumor Hypo/Acellular Stroma:	0%
Tumor Hypercellular Stroma:	0%
Necrosis:	0%
Pathology Verification notes from H&E review:	Tumor: Langerhans cell histiocytosis; Other Features/Comments: Langerhans cell histiocytosis = 45% of tumor
CASE Diagnosis (from medical center path report):	Leukemia, myelomonocytic, chronic
Age:	37
Gender:	Male
Tumor Grade:	Not Reported

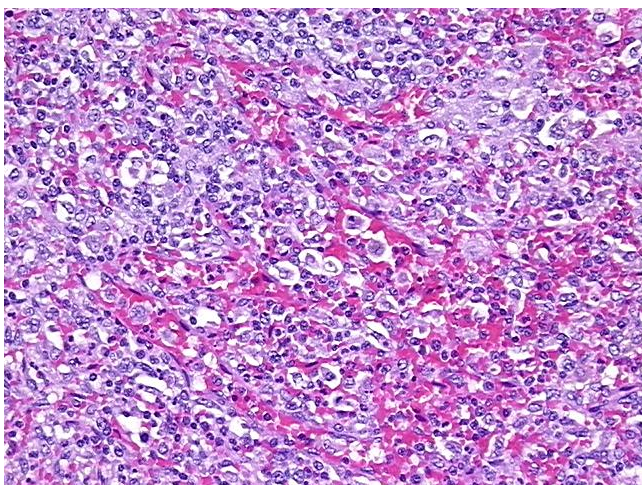


[View online »](#)

Minimum Stage Grouping:	Not Reported
T (Extent of Primary Tumor):	Not Reported
N (Lymph node metastasis):	Not Reported
M (Distant metastasis):	Not Reported
Diagnostic Test Results:	Myeloperoxidase ~ MPO ! by IHC,Positive; CD56 ~ NCAM ~ NKH1 ! by IHC,Positive; S100 protein,Positive; CD1a ~ Leu6 ! by IHC,Positive; CD68 ~ KP1 ! by IHC,Positive; CD34 ~ HPCA ! by IHC,Positive
Storage:	Store FFPE tissue sections at +4°C.
Stability:	All FFPE tissue sections are stable for 1 year from date of purchase.

Product images:

4x Image



20x Image