

Product datasheet for CS809535

Tissue FFPE Sections, Myelomonocytic cells

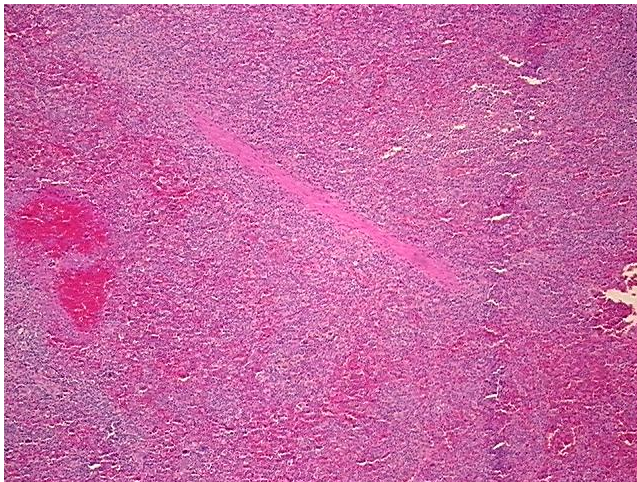
Product data:

Product Type:	FFPE Sections
Disease State:	Cancer
Diagnosis Category:	Abscess
Tissue:	Lymphoid tissue
Frozen Sample ID:	PA15477888
Case ID:	CU0000009323
Tissue of Origin:	Myelomonocytic cells
Site of Finding:	Spleen
Appearance:	T
Sample Diagnosis (from Pathology Verification):	Leukemia, myelomonocytic, chronic
Normal:	4%
Lesional:	6%
Tumor:	80%
Tumor Hypo/Acellular Stroma:	5%
Tumor Hypercellular Stroma:	0%
Necrosis:	5%
Pathology Verification notes from H&E review:	Tumor: leukemia associated with Langerhans cell histiocytosis which is a very rare phenomenon, after extensive study and consultation, it is believed that the latter is also a neoplastic process and the two might be originated from one malignant precursor (possible clonal relationship); Lesion (6%): Extramedullary hematopoiesis 100%
CASE Diagnosis (from medical center path report):	Leukemia, myelomonocytic, chronic
Age:	37

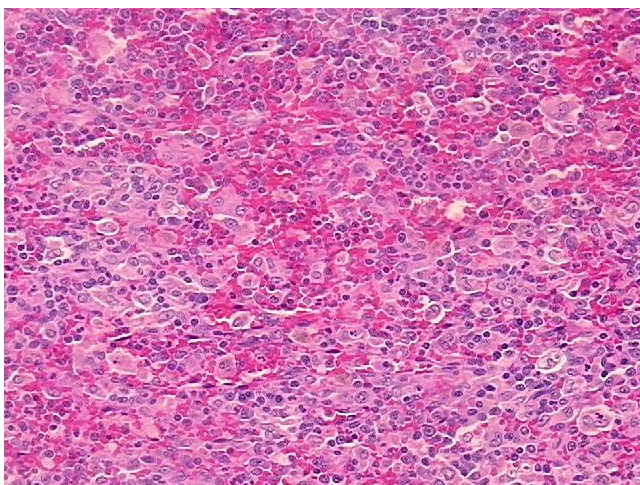


[View online »](#)

Gender:	Female
Race:	American Indian or Alaska Native
Tumor Grade:	Not Reported
Minimum Stage	Not Reported
Grouping:	
T (Extent of Primary Tumor):	Not Reported
N (Lymph node metastasis):	Not Reported
M (Distant metastasis):	Not Reported
Diagnostic Test Results:	Myeloperoxidase ~ MPO ! by IHC,Positive; CD56 ~ NCAM ~ NKH1 ! by IHC,Positive; S100 protein,Positive; CD1a ~ Leu6 ! by IHC,Positive; CD68 ~ KP1 ! by IHC,Positive; CD34 ~ HPCA ! by IHC,Positive
Storage:	Store FFPE tissue sections at +4°C.
Stability:	All FFPE tissue sections are stable for 1 year from date of purchase.

Product images:

4x Image



20x Image