

Product datasheet for **CS809521**

Tissue FFPE Sections, Breast

Product data:

Product Type:	FFPE Sections
Disease State:	Cancer
Diagnosis Category:	Breast Cancer
Tissue:	Breast
Frozen Sample ID:	PA15476D34
Case ID:	CU0000009313
Tissue of Origin:	Breast
Site of Finding:	Breast
Appearance:	Tumor
Sample Diagnosis (from Pathology Verification):	Adenocarcinoma of breast, ductal
Normal:	0%
Lesional:	0%
Tumor:	30%
Tumor Hypo/Acellular Stroma:	0%
Tumor Hypercellular Stroma:	10%
Necrosis:	60%
CASE Diagnosis (from medical center path report):	Adenocarcinoma of breast, ductal
Age:	70
Gender:	Female
Tumor Grade:	Nottingham G3: 8-9 points High combined grade (unfavorable)
Minimum Stage Grouping:	IIIA



[View online »](#)

T (Extent of Primary Tumor): pT2

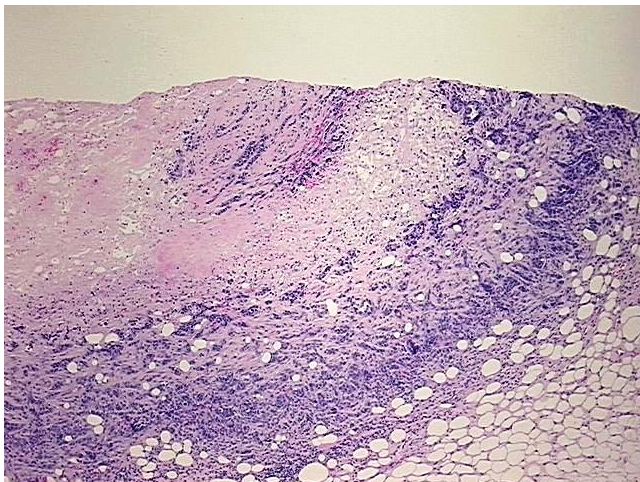
N (Lymph node metastasis): pN2a

M (Distant metastasis): pMX

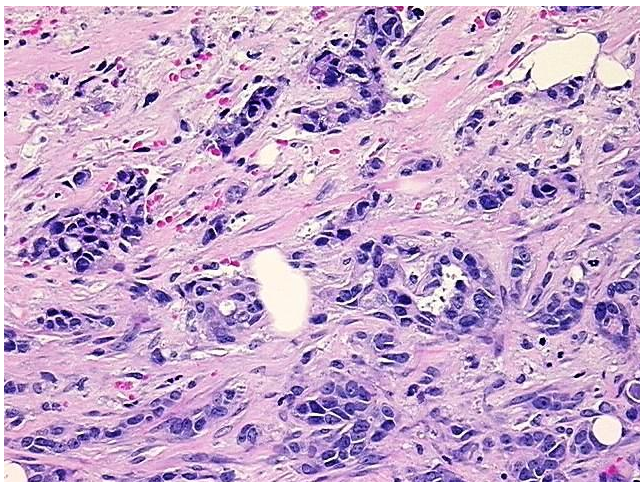
Storage: Store FFPE tissue sections at +4°C.

Stability: All FFPE tissue sections are stable for 1 year from date of purchase.

Product images:



4x Image



20x Image