

## Product datasheet for **CS809425**

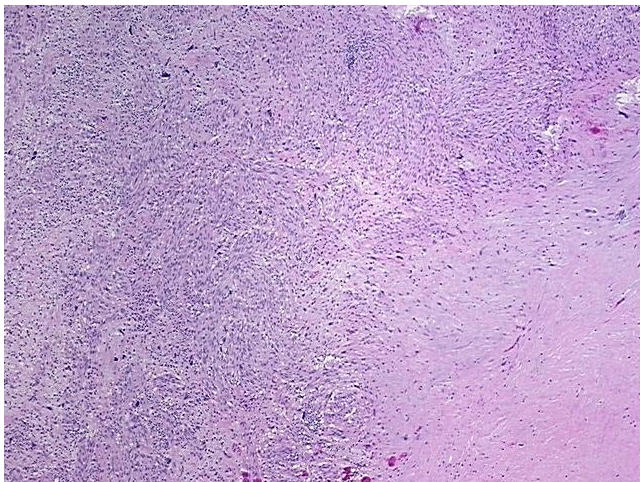
### Tissue FFPE Sections, Myometrium

#### Product data:

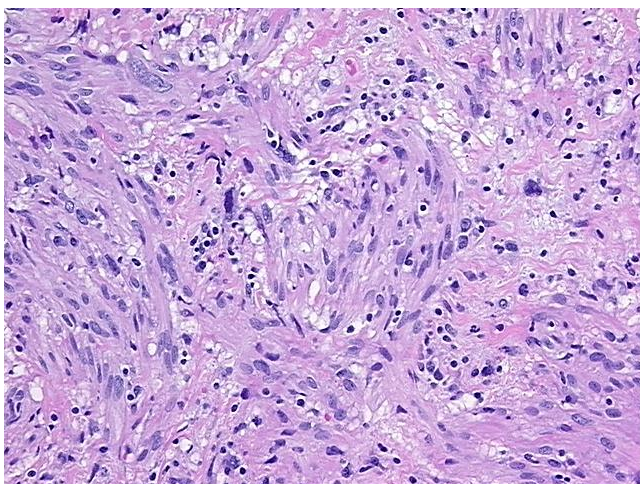
Product Type:	FFPE Sections
Disease State:	Cancer
Diagnosis Category:	Sarcoma
Tissue:	Myometrium
Frozen Sample ID:	PA0000719E
Case ID:	CU0000009117
Tissue of Origin:	Myometrium
Site of Finding:	Uterus
Appearance:	T
Sample Diagnosis (from Pathology Verification):	Leiomyosarcoma
Normal:	0%
Lesional:	0%
Tumor:	40%
Tumor Hypo/Acellular Stroma:	0%
Tumor Hypercellular Stroma:	0%
Necrosis:	60%
CASE Diagnosis (from medical center path report):	Leiomyosarcoma
Age:	62
Gender:	Female
Tumor Grade:	Not Reported
Minimum Stage Grouping:	Not Reported


[View online »](#)

T (Extent of Primary Tumor):	Not Reported
N (Lymph node metastasis):	Not Reported
M (Distant metastasis):	Not Reported
Storage:	Store FFPE tissue sections at +4°C.
Stability:	All FFPE tissue sections are stable for 1 year from date of purchase.

**Product images:**


4x Image



20x Image