

## Product datasheet for **CS809348**

### Tissue FFPE Sections, Lung

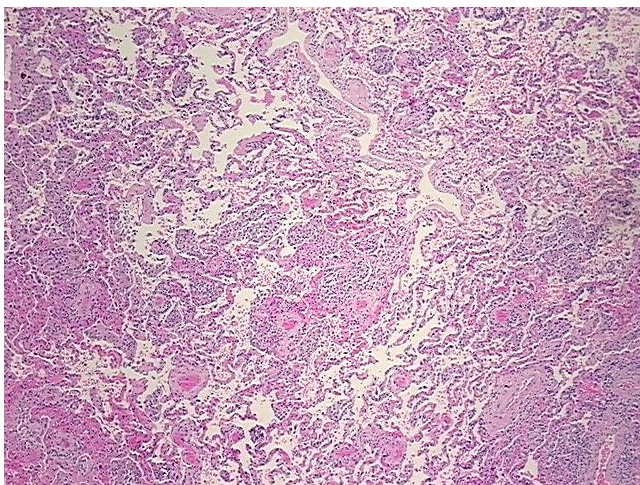
#### Product data:

|   |                                |
|---|--------------------------------|
| Product Type:                                     | FFPE Sections                  |
| Disease State:                                    | Other Disease                  |
| Diagnosis Category:                               | Congestion                     |
| Tissue:   | Lung                           |
| Frozen Sample ID:                                 | PA15476CFD                     |
| Case ID:  | CU0000009076                   |
| Tissue of Origin:                                 | Lung                           |
| Site of Finding:                                  | Lung                           |
| Appearance:                                       | L                              |
| Sample Diagnosis (from Pathology Verification):   | Congestion of lung             |
| Normal:   | 0%                             |
| Lesional:   | 100%                           |
| Tumor:  | 0%                             |
| Tumor Hypo/Acellular Stroma:                      | 0%                             |
| Tumor Hypercellular Stroma:                       | 0%                             |
| Necrosis:   | 0%                             |
| Pathology Verification notes from H&E review:     | no normal architecture         |
| CASE Diagnosis (from medical center path report): | Carcinoma of lung, large cell  |
| Age:  | 55                             |
| Gender:   | Male                           |
| Tumor Grade:                                      | AJCC G3: Poorly differentiated |

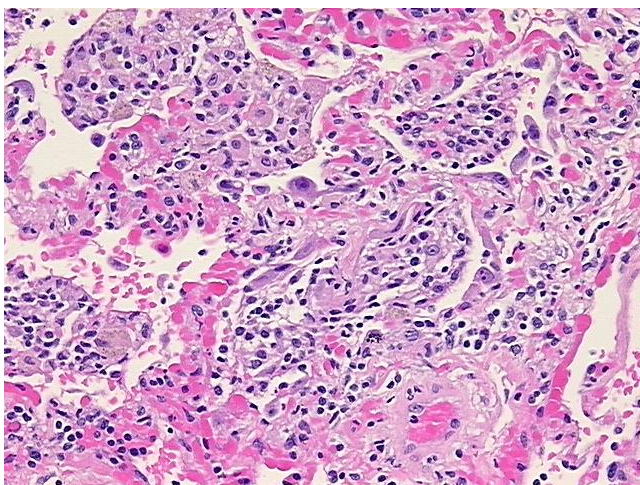


[View online »](#)

|                              |   |
|------------------------------|---|
| Minimum Stage Grouping:      | IIA   |
| T (Extent of Primary Tumor): | T1  |
| N (Lymph node metastasis):   | N1  |
| M (Distant metastasis):      | MX  |
| Storage:                     | Store FFPE tissue sections at +4°C.                                   |
| Stability:                   | All FFPE tissue sections are stable for 1 year from date of purchase. |

**Product images:**

4x Image



20x Image