

Product datasheet for CS809299

Tissue FFPE Sections, Ovary: left

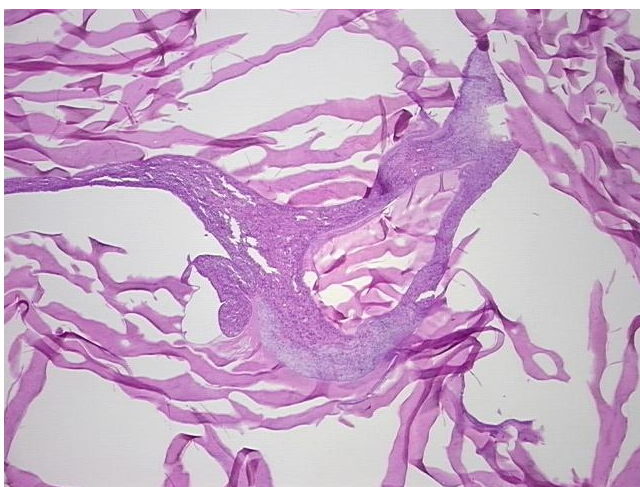
Product data:

| | |
|---|--------------------------------------|
| Product Type: | FFPE Sections |
| Disease State: | Other Disease |
| Diagnosis Category: | Borderline Ovarian Tumor |
| Tissue: | Ovary |
| Frozen Sample ID: | PA00007E64 |
| Case ID: | CU0000006911 |
| Tissue of Origin: | Ovary: left |
| Site of Finding: | Ovary: left |
| Appearance: | T |
| Sample Diagnosis (from Pathology Verification): | Tumor of ovary, mucinous, borderline |
| Normal: | 0% |
| Lesional: | 0% |
| Tumor: | 10% |
| Tumor Hypo/Acellular Stroma: | 70% |
| Tumor Hypercellular Stroma: | 20% |
| Necrosis: | 0% |
| Pathology Verification notes from H&E review: | Tumor Stroma (Hypo/Acellular): Mucin |
| CASE Diagnosis (from medical center path report): | Tumor of ovary, mucinous, borderline |
| Age: | 49 |
| Gender: | Female |
| Tumor Grade: | AJCC GB: Borderline malignancy |

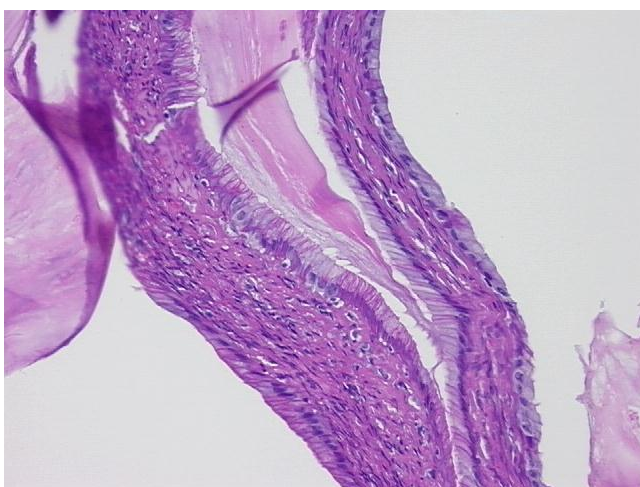


[View online »](#)

| | |
|------------------------------|--|
| Minimum Stage Grouping: | IIIA |
| T (Extent of Primary Tumor): | T3a |
| N (Lymph node metastasis): | NX |
| M (Distant metastasis): | MX |
| Diagnostic Test Results: | Cytokeratin 7 ~ CK7 ! by IHC,Positive; Cytokeratin 20 ~ CK20 ! by IHC,Positive |
| Storage: | Store FFPE tissue sections at +4°C. |
| Stability: | All FFPE tissue sections are stable for 1 year from date of purchase. |

Product images:

4x Image



20x Image