

Product datasheet for **CS809237**

Tissue FFPE Sections, Lung

Product data:

Product Type:	FFPE Sections
Disease State:	Other Disease
Diagnosis Category:	Chronic Obstructive Pulmonary Disease (COPD)
Tissue:	Lung
Frozen Sample ID:	PA00007DA2
Case ID:	CU0000006889
Tissue of Origin:	Lung
Site of Finding:	Lung
Appearance:	L
Sample Diagnosis (from Pathology Verification):	Emphysema, centrilobular
Normal:	0%
Lesional:	100%
Tumor:	0%
Tumor Hypo/Acellular Stroma:	0%
Tumor Hypercellular Stroma:	0%
Necrosis:	0%
Pathology Verification notes from H&E review:	non-neoplastic lesion: 50% alveoli, 5% bronchioles, 45% fibrovascular septa
CASE Diagnosis (from medical center path report):	Emphysema, centrilobular
Age:	55
Gender:	Male
Diagnostic Test Results:	Acid-fast bacteria ~ AFB ~ Ziehl-Neelsen acid fast,Negative

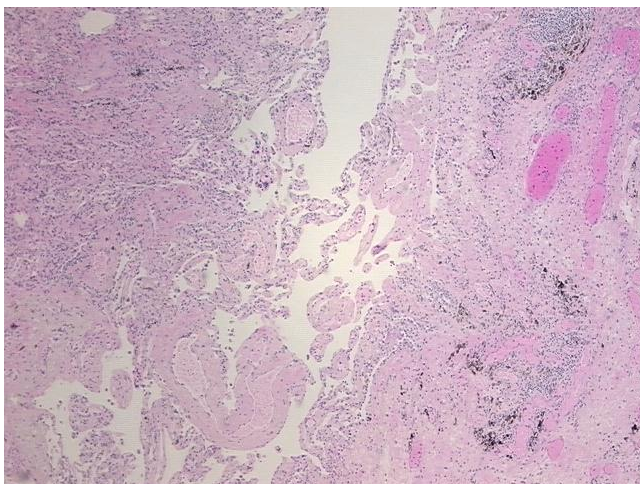


[View online »](#)

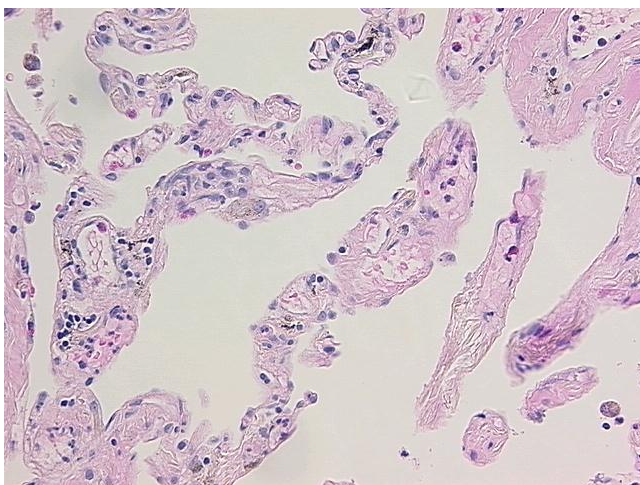
Storage: Store FFPE tissue sections at +4°C.

Stability: All FFPE tissue sections are stable for 1 year from date of purchase.

Product images:



4x Image



20x Image