

Product datasheet for **CS809137**

Tissue FFPE Sections, Endometriotic tissue

Product data:

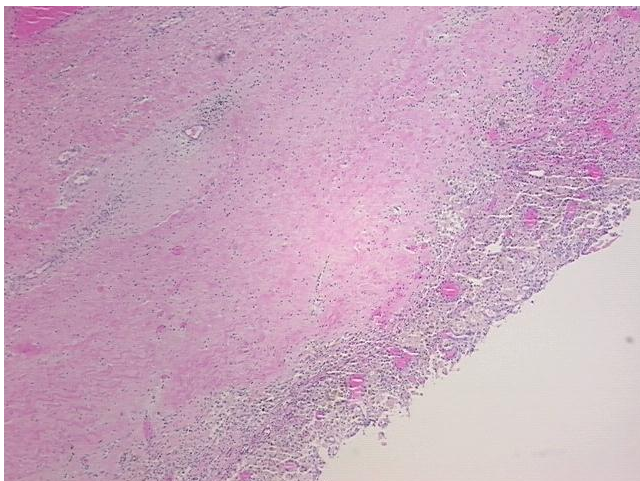
Product Type:	FFPE Sections
Disease State:	Other Disease
Diagnosis Category:	Endometriosis
Tissue:	Endometriotic tissue
Frozen Sample ID:	PA1547784B
Case ID:	CU0000006859
Tissue of Origin:	Endometriotic tissue
Site of Finding:	Ovary
Appearance:	L
Sample Diagnosis (from Pathology Verification):	Endometriosis
Normal:	80%
Lesional:	20%
Tumor:	0%
Tumor Hypo/Acellular Stroma:	0%
Tumor Hypercellular Stroma:	0%
Necrosis:	0%
Pathology Verification notes from H&E review:	95% ovarian stroma, 5% hilar vessel; lesion is endometriosis with 0% glandular epithelium, 100% fibrous stroma
CASE Diagnosis (from medical center path report):	Endometriosis
Age:	30
Gender:	Female
Storage:	Store FFPE tissue sections at +4°C.



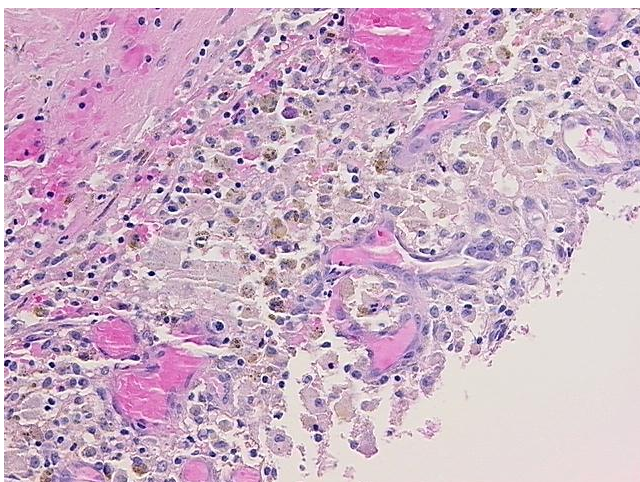
[View online »](#)

Stability: All FFPE tissue sections are stable for 1 year from date of purchase.

Product images:



4x Image



20x Image