

Product datasheet for **CS808855**

Tissue FFPE Sections, Urinary bladder

Product data:

| | |
|---|---|
| Product Type: | FFPE Sections |
| Disease State: | Cancer |
| Diagnosis Category: | Bladder Cancer |
| Tissue: | Urinary bladder |
| Frozen Sample ID: | PA0000690A |
| Case ID: | CU0000006775 |
| Tissue of Origin: | Urinary bladder |
| Site of Finding: | Lymph node |
| Appearance: | Tumor |
| Sample Diagnosis (from Pathology Verification): | Carcinoma of bladder, transitional cell, metastatic |
| Normal: | 10% |
| Lesional: | 0% |
| Tumor: | 90% |
| Tumor Hypo/Acellular Stroma: | 0% |
| Tumor Hypercellular Stroma: | 0% |
| Necrosis: | 0% |
| CASE Diagnosis (from medical center path report): | Carcinoma of bladder, transitional cell |
| Age: | 67 |
| Gender: | Male |
| Tumor Grade: | AJCC G3: Poorly differentiated |
| Minimum Stage Grouping: | IV |



[View online »](#)

T (Extent of Primary Tumor): pT3

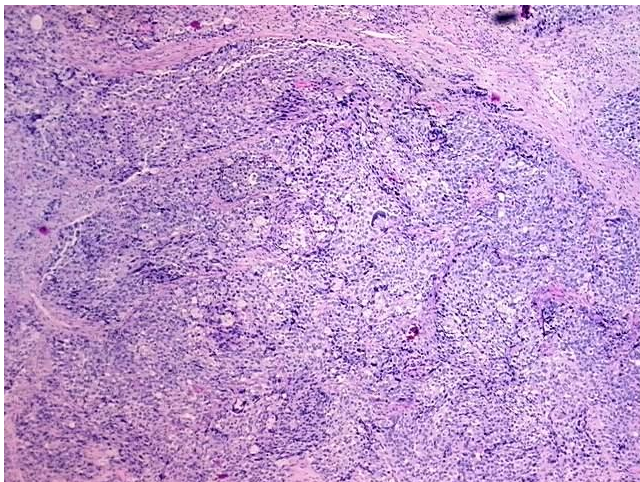
N (Lymph node metastasis): pN1

M (Distant metastasis): pMX

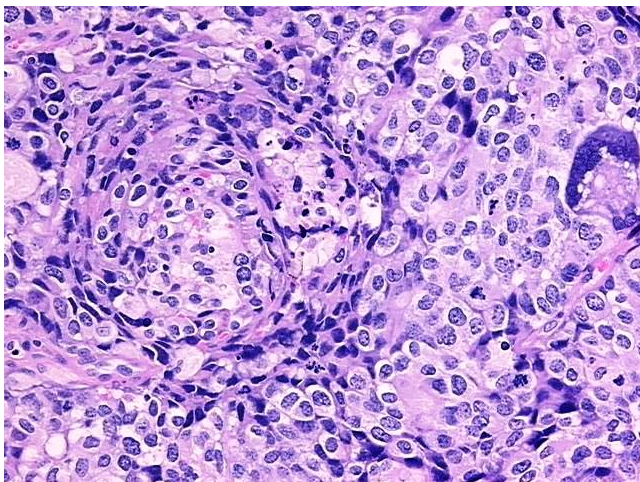
Storage: Store FFPE tissue sections at +4°C.

Stability: All FFPE tissue sections are stable for 1 year from date of purchase.

Product images:



4x Image



20x Image