

## Product datasheet for **CS808821**

### Tissue FFPE Sections, Endometriotic tissue

#### Product data:

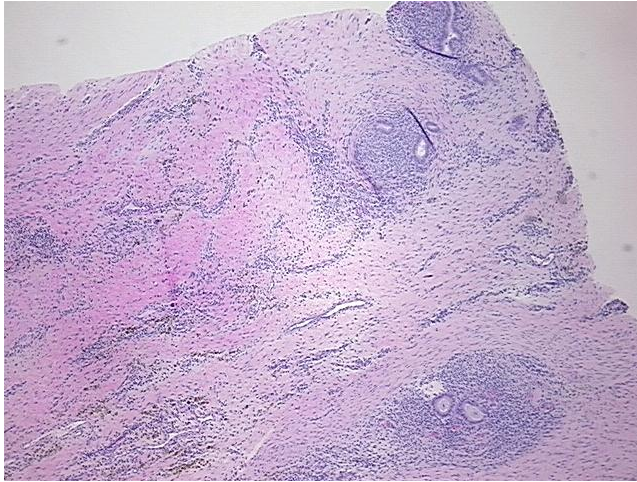
Product Type:	FFPE Sections
Disease State:	Other Disease
Diagnosis Category:	Endometriosis
Tissue:	Endometriotic tissue
Frozen Sample ID:	PA1547780D
Case ID:	CU0000006753
Tissue of Origin:	Endometriotic tissue
Site of Finding:	Leg
Appearance:	L
Sample Diagnosis (from Pathology Verification):	Endometriosis
Normal:	0%
Lesional:	98%
Tumor:	0%
Tumor Hypo/Acellular Stroma:	0%
Tumor Hypercellular Stroma:	0%
Necrosis:	2%
Pathology Verification notes from H&E review:	lesion: 15% glands, 85% stroma
CASE Diagnosis (from medical center path report):	Endometriosis
Age:	26
Gender:	Female
Storage:	Store FFPE tissue sections at +4°C.



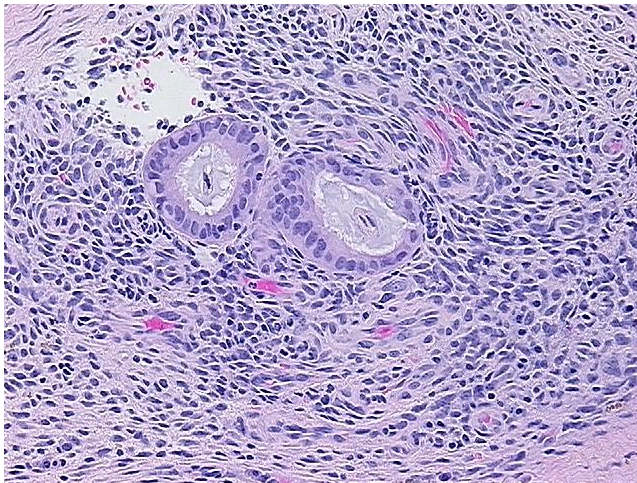
[View online »](#)

Stability: All FFPE tissue sections are stable for 1 year from date of purchase.

**Product images:**



4x Image



20x Image