

## Product datasheet for **CS808771**

### Tissue FFPE Sections, Colon

#### Product data:

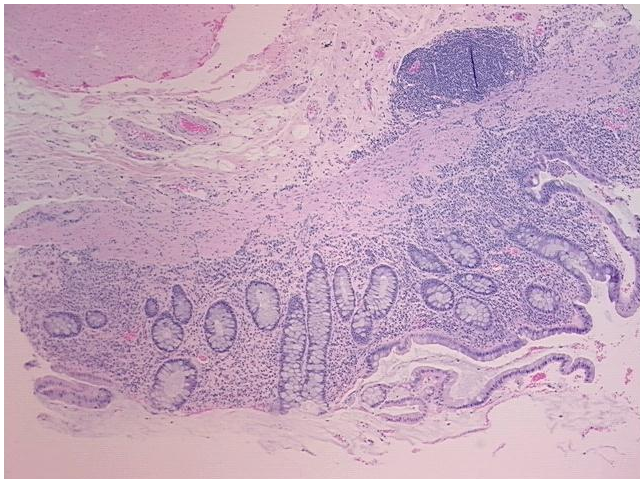
|                                                   |                                               |
|---------------------------------------------------|-----------------------------------------------|
| Product Type:                                     | FFPE Sections                                 |
| Disease State:                                    | Other Disease                                 |
| Diagnosis Category:                               | Inflammatory Bowel Disease (IBD)              |
| Tissue:                                           | Colon                                         |
| Frozen Sample ID:                                 | PA000062F3                                    |
| Case ID:                                          | CU0000006720                                  |
| Tissue of Origin:                                 | Colon                                         |
| Site of Finding:                                  | Colon                                         |
| Appearance:                                       | L                                             |
| Sample Diagnosis (from Pathology Verification):   | Colitis, ulcerative, chronic active           |
| Normal:                                           | 0%                                            |
| Lesional:                                         | 100%                                          |
| Tumor:                                            | 0%                                            |
| Tumor Hypo/Acellular Stroma:                      | 0%                                            |
| Tumor Hypercellular Stroma:                       | 0%                                            |
| Necrosis:                                         | 0%                                            |
| Pathology Verification notes from H&E review:     | lesion: 15% mucosa, 15% submucosa, 70% muscle |
| CASE Diagnosis (from medical center path report): | Colitis, ulcerative, chronic active           |
| Age:                                              | 22                                            |
| Gender:                                           | Male                                          |
| Storage:                                          | Store FFPE tissue sections at +4°C.           |



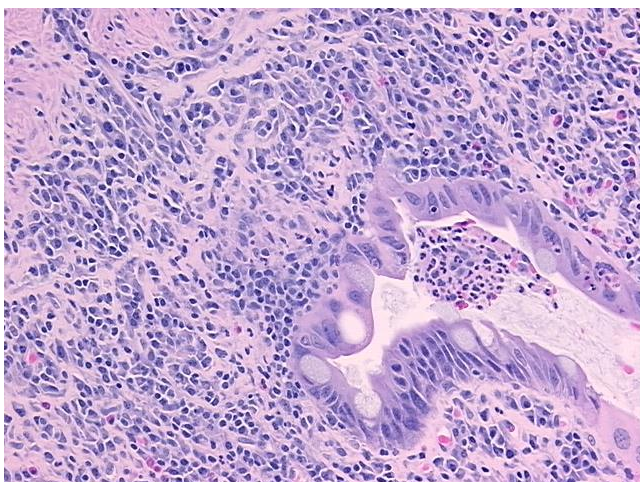
[View online »](#)

Stability: All FFPE tissue sections are stable for 1 year from date of purchase.

**Product images:**



4x Image



20x Image