

## Product datasheet for **CS808725**

### Tissue FFPE Sections, Endometriotic tissue

#### Product data:

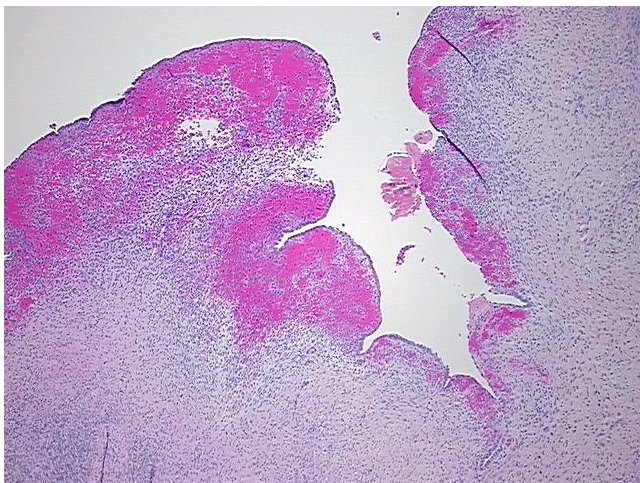
Product Type:	FFPE Sections
Disease State:	Other Disease
Diagnosis Category:	Cysts
Tissue:	Ovary
Frozen Sample ID:	PA1547781B
Case ID:	CU0000006700
Tissue of Origin:	Endometriotic tissue
Site of Finding:	Ovary: left
Appearance:	L
Sample Diagnosis (from Pathology Verification):	Cyst of ovary, endometrial
Normal:	60%
Lesional:	40%
Tumor:	0%
Tumor Hypo/Acellular Stroma:	0%
Tumor Hypercellular Stroma:	0%
Necrosis:	0%
Pathology Verification notes from H&E review:	lesion: 35% endometriotic cyst lining, 65% fibrous wall; normal: 40% ovarian stroma, 60% hilar vessels
CASE Diagnosis (from medical center path report):	Cyst of ovary, endometrial
Age:	22
Gender:	Female
Storage:	Store FFPE tissue sections at +4°C.



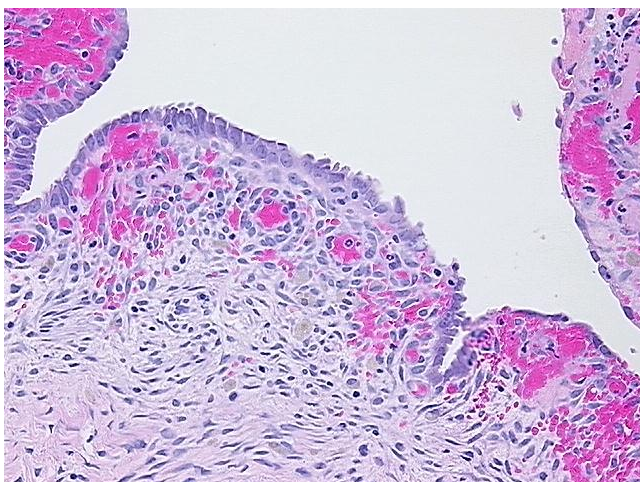
[View online »](#)

Stability: All FFPE tissue sections are stable for 1 year from date of purchase.

**Product images:**



4x Image



20x Image