

Product datasheet for **CS808676**

Tissue FFPE Sections, Liver

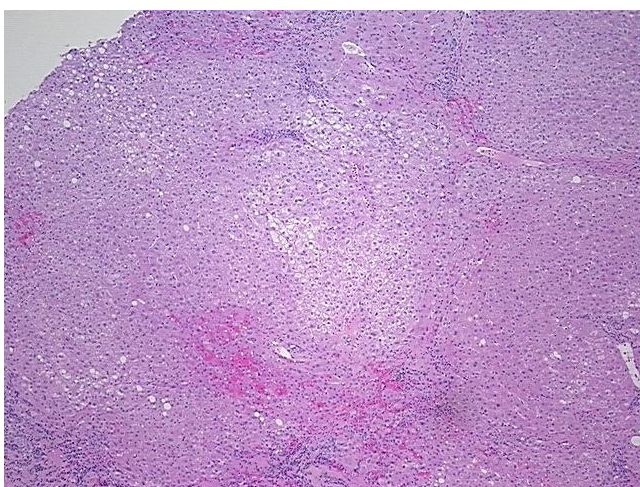
Product data:

Product Type:	FFPE Sections
Diagnosis Category:	Lung Congestion
Tissue:	Liver
Frozen Sample ID:	PA15476AC5
Case ID:	CU0000006675
Tissue of Origin:	Liver
Site of Finding:	Liver
Sample Diagnosis (from Pathology Verification):	Cirrhosis of liver
Normal:	0%
Lesional:	100%
Tumor:	0%
Tumor Hypo/Acellular Stroma:	0%
Tumor Hypercellular Stroma:	0%
Necrosis:	0%
Pathology Verification notes from H&E review:	Non Tumor Structures: 90% Lobules, 10% Triads; Other Features/Comments: Hepatic architecture is distorted by bridging fibrosis, and regenerative nodules incompletely surrounded by fibrous septa. Portal tracts are expanded by lymphoplasmacytic infiltrate with piecemeal necrosis.
CASE Diagnosis (from medical center path report):	Carcinoma of liver, hepatocellular
Age:	77
Gender:	Not specified
Tumor Grade:	AJCC G1: Well differentiated

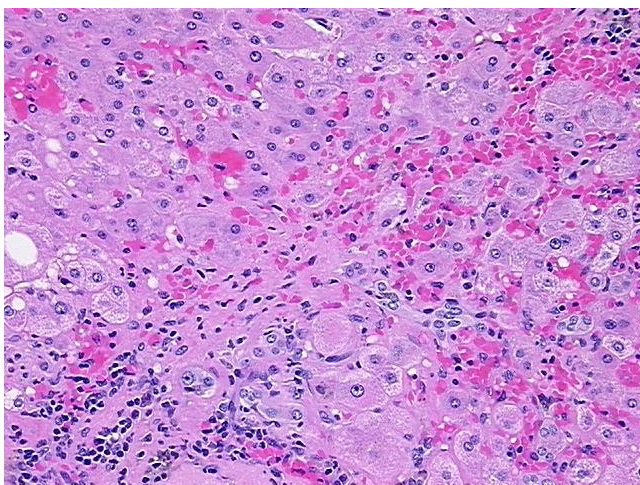


[View online »](#)

Minimum Stage Grouping:	II
T (Extent of Primary Tumor):	T2
N (Lymph node metastasis):	NX
M (Distant metastasis):	MX
Diagnostic Test Results:	Trichrome - Masson stain,Fibrosis; Reticulin stain,Positive
Storage:	Store FFPE tissue sections at +4°C.
Stability:	All FFPE tissue sections are stable for 1 year from date of purchase.

Product images:

4x Image



20x Image