

Product datasheet for **CS808657**

Tissue FFPE Sections, Endometriotic tissue

Product data:

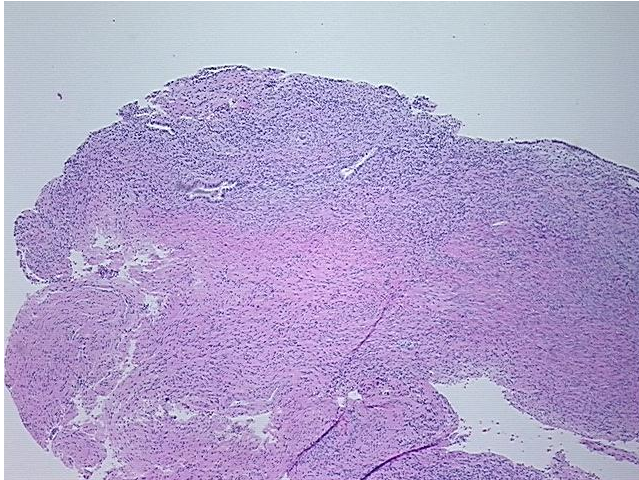
Product Type:	FFPE Sections
Disease State:	Other Disease
Diagnosis Category:	Cysts
Tissue:	Ovary
Frozen Sample ID:	PA00005BC7
Case ID:	CU0000006669
Tissue of Origin:	Endometriotic tissue
Site of Finding:	Ovary: right
Appearance:	L
Sample Diagnosis (from Pathology Verification):	Cyst of ovary, endometrial
Normal:	90%
Lesional:	10%
Tumor:	0%
Tumor Hypo/Acellular Stroma:	0%
Tumor Hypercellular Stroma:	0%
Necrosis:	0%
Pathology Verification notes from H&E review:	normal: 95% ovarian stroma, 5% hilar vessels
CASE Diagnosis (from medical center path report):	Cyst of ovary, endometrial
Age:	57
Gender:	Female
Storage:	Store FFPE tissue sections at +4°C.



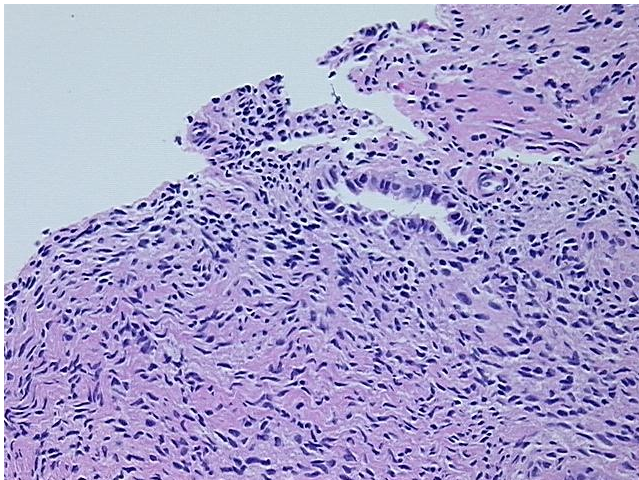
[View online »](#)

Stability: All FFPE tissue sections are stable for 1 year from date of purchase.

Product images:



4x Image



20x Image