

Product datasheet for **CS808641**

Tissue FFPE Sections, Ileum

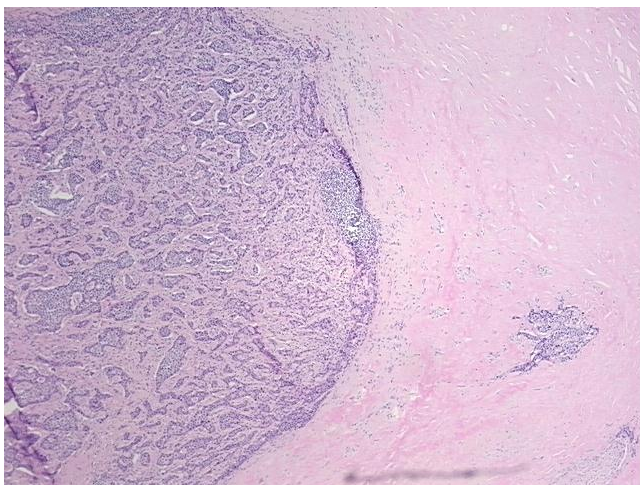
Product data:

Product Type:	FFPE Sections
Disease State:	Cancer
Diagnosis Category:	Carcinoid/Neuroendocrine Tumors
Tissue:	Small intestine
Frozen Sample ID:	PA0F33542B
Case ID:	CU0000006663
Tissue of Origin:	Ileum
Site of Finding:	Ileum
Appearance:	T
Sample Diagnosis (from Pathology Verification):	Tumor of ileum, carcinoid
Normal:	10%
Lesional:	0%
Tumor:	25%
Tumor Hypo/Acellular Stroma:	20%
Tumor Hypercellular Stroma:	45%
Necrosis:	0%
Pathology Verification notes from H&E review:	Tumor Stroma (Cellular): Fibroblastic cells; Tumor Stroma (Hypo/Acellular): hyalinization
CASE Diagnosis (from medical center path report):	Tumor of ileum, carcinoid
Age:	77
Gender:	Female
Tumor Grade:	Not Reported

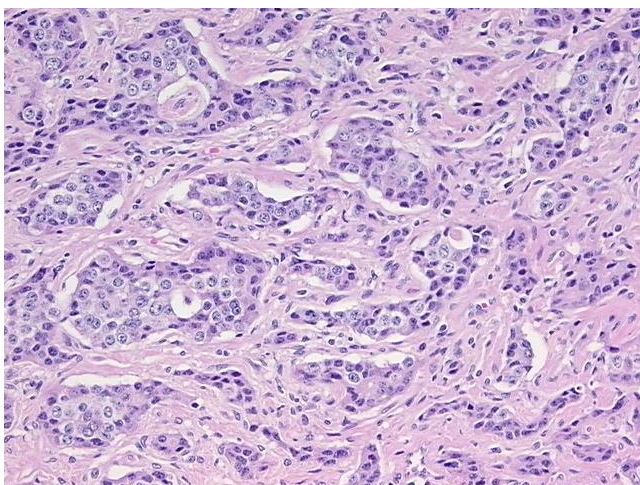


[View online »](#)

Minimum Stage Grouping:	Not Reported
T (Extent of Primary Tumor):	Not Reported
N (Lymph node metastasis):	Not Reported
M (Distant metastasis):	Not Reported
Storage:	Store FFPE tissue sections at +4°C.
Stability:	All FFPE tissue sections are stable for 1 year from date of purchase.

Product images:

4x Image



20x Image