

## Product datasheet for **CS808584**

### Tissue FFPE Sections, Lung

#### Product data:

Product Type:	FFPE Sections
Disease State:	Other Disease
Diagnosis Category:	Chronic Obstructive Pulmonary Disease (COPD)
Tissue:	Lung
Frozen Sample ID:	PA154770BA
Case ID:	CU0000006654
Tissue of Origin:	Lung
Site of Finding:	Lung
Appearance:	L
Sample Diagnosis (from Pathology Verification):	Emphysematous changes
Normal:	0%
Lesional:	100%
Tumor:	0%
Tumor Hypo/Acellular Stroma:	0%
Tumor Hypercellular Stroma:	0%
Necrosis:	0%
Pathology Verification notes from H&E review:	lesion also associated with fibrosis with no normal architecture
CASE Diagnosis (from medical center path report):	Adenocarcinoma of colon, metastatic
Age:	87
Gender:	Female
Tumor Grade:	Not Reported



[View online »](#)

Minimum Stage Grouping: IV

T (Extent of Primary Tumor): TX

N (Lymph node metastasis): NX

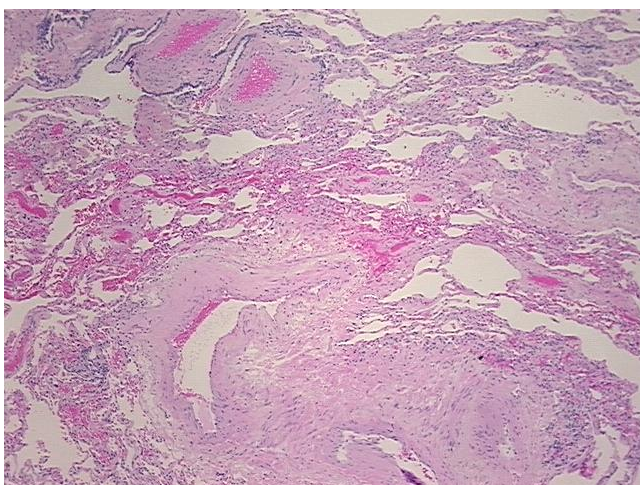
M (Distant metastasis): M1

Diagnostic Test Results: Cytokeratin 7 ~ CK7 ! by IHC,Positive, weak; Cytokeratin 20 ~ CK20 ! by IHC,Positive; MSA ~ Muscle Specific Actin,Reported as Performed or Reviewed; Thyroid transcription factor 1 ~ TTF1 ! by IHC,Negative

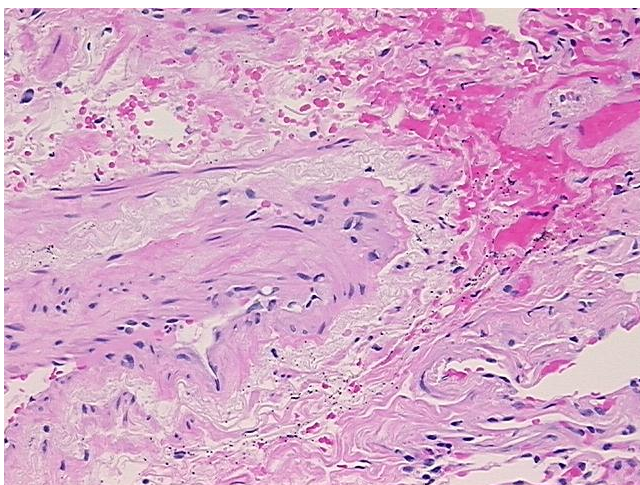
Storage: Store FFPE tissue sections at +4°C.

Stability: All FFPE tissue sections are stable for 1 year from date of purchase.

### Product images:



4x Image



20x Image