

Product datasheet for **CS808429**

Tissue FFPE Sections, Colon: right

Product data:

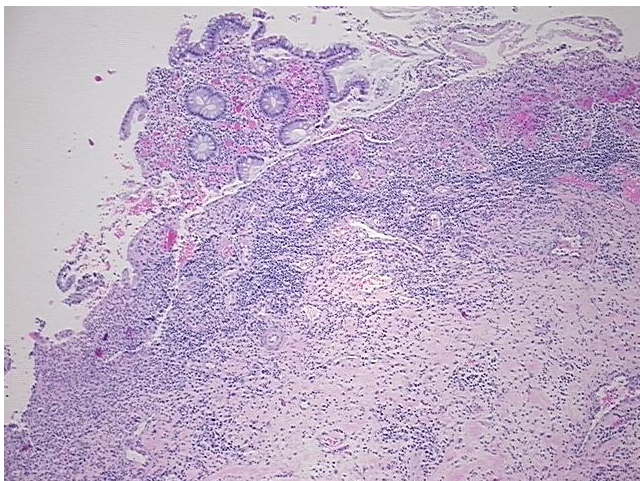
| | |
|---|--|
| Product Type: | FFPE Sections |
| Disease State: | Other Disease |
| Diagnosis Category: | Inflammatory Bowel Disease (IBD) |
| Tissue: | Colon |
| Frozen Sample ID: | PA15476DF4 |
| Case ID: | CU0000006623 |
| Tissue of Origin: | Colon: right |
| Site of Finding: | Colon: right |
| Appearance: | L |
| Sample Diagnosis (from Pathology Verification): | Colitis, ulcerative, chronic active |
| Normal: | 0% |
| Lesional: | 100% |
| Tumor: | 0% |
| Tumor Hypo/Acellular Stroma: | 0% |
| Tumor Hypercellular Stroma: | 0% |
| Necrosis: | 0% |
| Pathology Verification notes from H&E review: | 3% mucosa with severe ulceration, 27% submucosa, 70% muscle with serositis |
| CASE Diagnosis (from medical center path report): | Colitis, ulcerative, chronic active |
| Age: | 47 |
| Gender: | Female |
| Storage: | Store FFPE tissue sections at +4°C. |



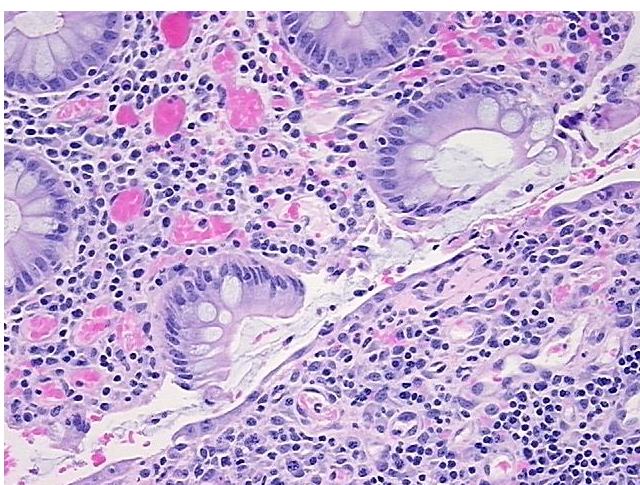
[View online »](#)

Stability: All FFPE tissue sections are stable for 1 year from date of purchase.

Product images:



4x Image



20x Image