

## Product datasheet for CS808425

### Tissue FFPE Sections, Skin

#### Product data:

|   |  |
|---|--|
| Product Type:                                     | FFPE Sections                              |
| Disease State:                                    | Cancer                                     |
| Diagnosis Category:                               | Skin Cancer                                |
| Tissue:   | Skin                                       |
| Frozen Sample ID:                                 | PA00005ECC                                 |
| Case ID:  | CU0000006620                               |
| Tissue of Origin:                                 | Skin                                       |
| Site of Finding:                                  | Lymph node                                 |
| Appearance:                                       | Tumor                                      |
| Sample Diagnosis (from Pathology Verification):   | Carcinoma of skin, Merkel cell, metastatic |
| Normal:   | 0%   |
| Lesional:   | 0%   |
| Tumor:  | 55%  |
| Tumor Hypo/Acellular Stroma:                      | 0%   |
| Tumor Hypercellular Stroma:                       | 15%  |
| Necrosis:   | 30%  |
| CASE Diagnosis (from medical center path report): | Carcinoma of skin, Merkel cell, metastatic |
| Age:  | 60   |
| Gender:   | Male                                       |
| Tumor Grade:                                      | Not Reported                               |
| Minimum Stage Grouping:                           | III  |



[View online »](#)

T (Extent of Primary Tumor): pT2

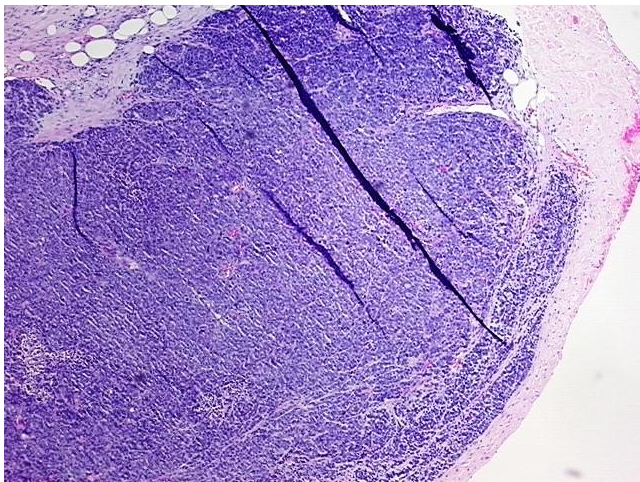
N (Lymph node metastasis): pN1

M (Distant metastasis): pMX

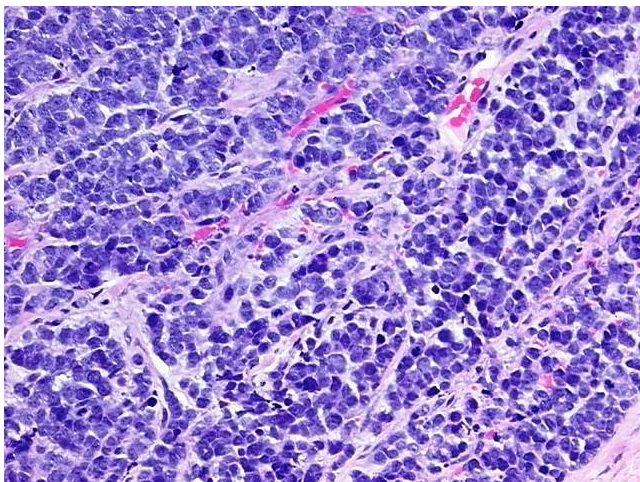
Storage: Store FFPE tissue sections at +4°C.

Stability: All FFPE tissue sections are stable for 1 year from date of purchase.

### Product images:



4x Image



20x Image