

Product datasheet for **CS808270**

Tissue FFPE Sections, Endometrium

Product data:

Product Type:	FFPE Sections
Disease State:	Cancer
Diagnosis Category:	Endometrial Cancer
Tissue:	Endometrium
Frozen Sample ID:	PA15477112
Case ID:	CU0000006585
Tissue of Origin:	Endometrium
Site of Finding:	Uterus
Appearance:	T
Sample Diagnosis (from Pathology Verification):	Adenocarcinoma of endometrium, endometrioid, squamous features, focal
Normal:	10%
Lesional:	0%
Tumor:	60%
Tumor Hypo/Acellular Stroma:	0%
Tumor Hypercellular Stroma:	25%
Necrosis:	5%
CASE Diagnosis (from medical center path report):	Adenocarcinoma of endometrium, endometrioid, squamous features, focal
Age:	64
Gender:	Female
Tumor Grade:	FIGO G1: Well differentiated
Minimum Stage Grouping:	IB



[View online »](#)

T (Extent of Primary Tumor): T1b

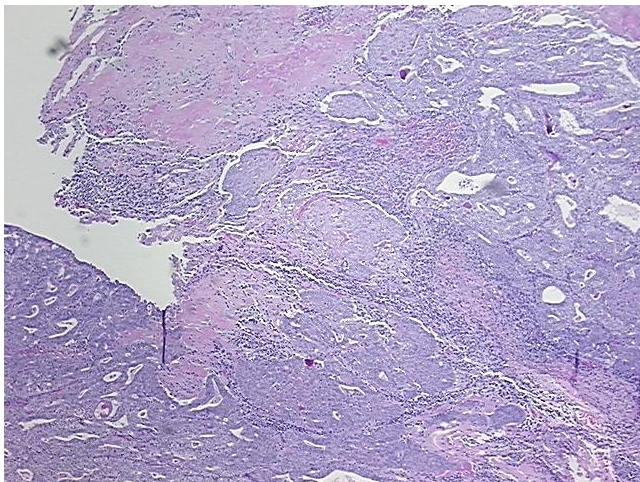
N (Lymph node metastasis): NX

M (Distant metastasis): MX

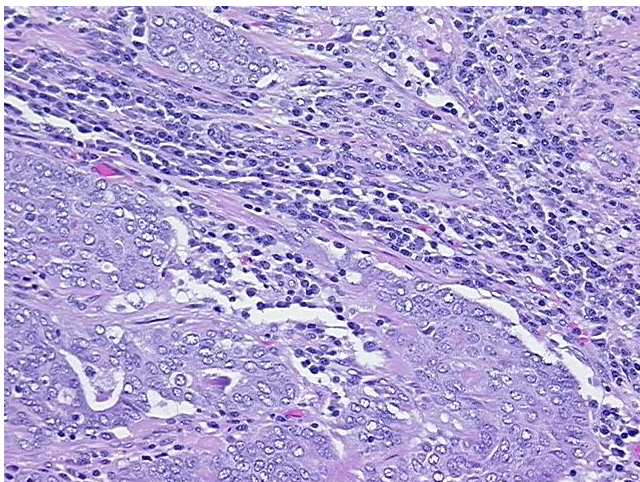
Storage: Store FFPE tissue sections at +4°C.

Stability: All FFPE tissue sections are stable for 1 year from date of purchase.

Product images:



4x Image



20x Image