

## Product datasheet for **CS808252**

### Tissue FFPE Sections, Soft tissue

#### Product data:

Product Type:	FFPE Sections
Disease State:	Cancer
Diagnosis Category:	Sarcoma
Tissue:	Soft tissue
Frozen Sample ID:	PA154773F4
Case ID:	CU0000006576
Tissue of Origin:	Soft tissue
Site of Finding:	Uterus
Appearance:	T
Sample Diagnosis (from Pathology Verification):	Rhabdomyosarcoma of uterus
Normal:	0%
Lesional:	0%
Tumor:	90%
Tumor Hypo/Acellular Stroma:	0%
Tumor Hypercellular Stroma:	10%
Necrosis:	0%
CASE Diagnosis (from medical center path report):	Rhabdomyosarcoma of uterus
Age:	66
Gender:	Female
Tumor Grade:	AJCC G4: Undifferentiated
Minimum Stage Grouping:	III



[View online »](#)

T (Extent of Primary Tumor): T3

N (Lymph node metastasis): N0

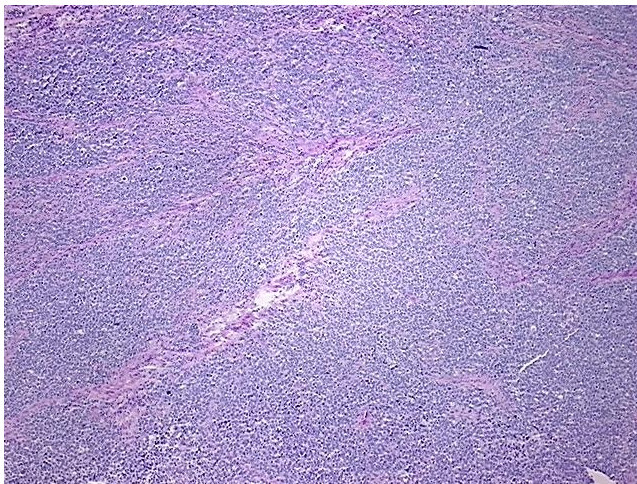
M (Distant metastasis): MX

Diagnostic Test Results: Myogenin ~ Myf4 ! by IHC,Positive; Smooth muscle actin ~ SMA ~ Alpha-SMA ! by IHC,Negative; Progesterone receptor ~ PR ! by IHC,Negative; Estrogen receptor ~ ER ! by IHC,Negative; Desmin ! by IHC,Positive; Cytokeratin CAM5.2 ~ CAM5.2 ! by IHC

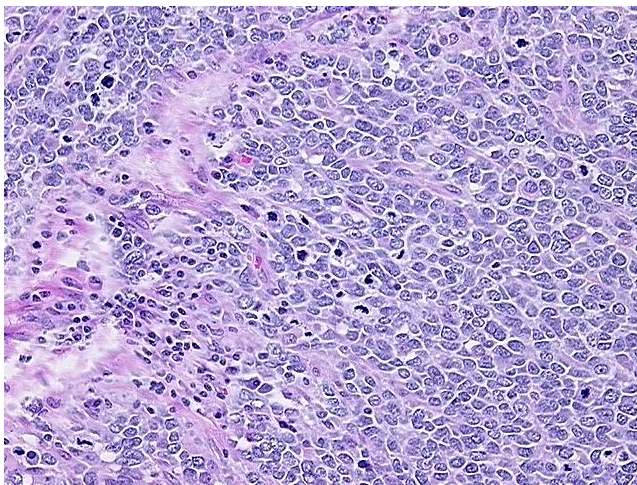
Storage: Store FFPE tissue sections at +4°C.

Stability: All FFPE tissue sections are stable for 1 year from date of purchase.

### Product images:



4x Image



20x Image