

## Product datasheet for **CS808201**

### Tissue FFPE Sections, Breast

#### Product data:

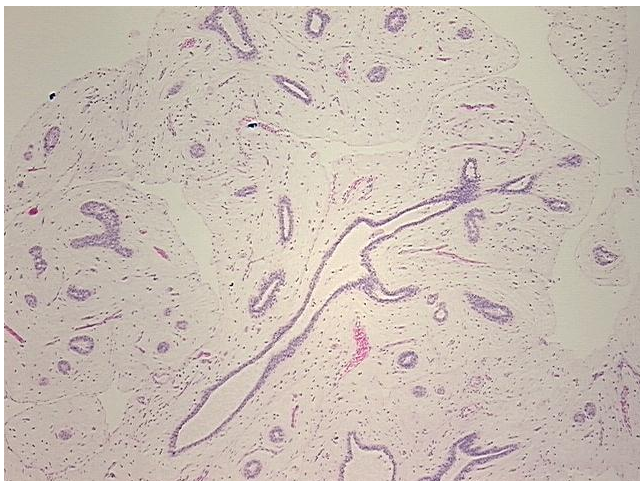
Product Type:	FFPE Sections
Disease State:	Other Disease
Diagnosis Category:	Benign Tumors
Tissue:	Breast
Frozen Sample ID:	PA00004E97
Case ID:	CU0000006542
Tissue of Origin:	Breast
Site of Finding:	Breast
Appearance:	T
Sample Diagnosis (from Pathology Verification):	Fibroadenoma of breast
Normal:	30%
Lesional:	0%
Tumor:	10%
Tumor Hypo/Acellular Stroma:	60%
Tumor Hypercellular Stroma:	0%
Necrosis:	0%
Pathology Verification notes from H&E review:	tumor stroma contains loose cellular collagenous connective tissue
CASE Diagnosis (from medical center path report):	Fibroadenoma of breast
Age:	60
Gender:	Female
Storage:	Store FFPE tissue sections at +4°C.



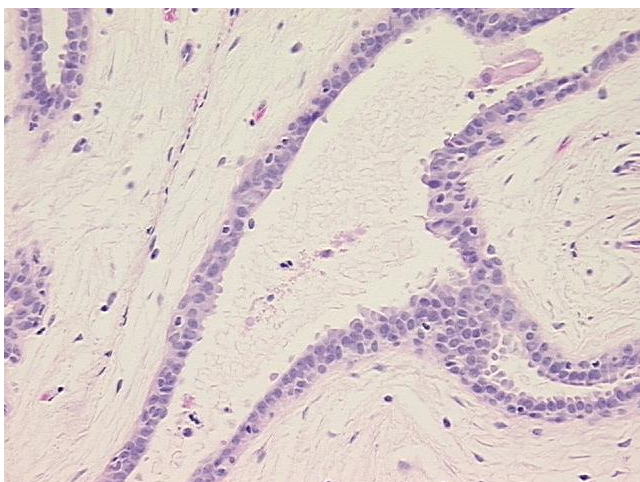
[View online »](#)

Stability: All FFPE tissue sections are stable for 1 year from date of purchase.

**Product images:**



4x Image



20x Image