

## Product datasheet for **CS808181**

### Tissue FFPE Sections, Cervix

#### Product data:

|   |  |
|---|--|
| Product Type:                                     | FFPE Sections  |
| Disease State:                                    | Normal   |
| Diagnosis Category:                               | Normal   |
| Tissue:   | Cervix   |
| Frozen Sample ID:                                 | PA000062D2   |
| Case ID:  | CU0000006527   |
| Tissue of Origin:                                 | Cervix   |
| Site of Finding:                                  | Cervix   |
| Appearance:                                       | R  |
| Sample Diagnosis (from Pathology Verification):   | Within normal limits   |
| Normal:   | 100%   |
| Lesional:   | 0%   |
| Tumor:  | 0%   |
| Tumor Hypo/Acellular Stroma:                      | 0%   |
| Tumor Hypercellular Stroma:                       | 0%   |
| Necrosis:   | 0%   |
| Pathology Verification notes from H&E review:     | 2% glandular epithelium, 5% squamous epithelium, 93% fibromuscular stroma, transformation zone (-) |
| CASE Diagnosis (from medical center path report): | Carcinoma of cervix, squamous cell   |
| Age:  | 46   |
| Gender:   | Female   |
| Tumor Grade:                                      | AJCC G3: Poorly differentiated   |



[View online »](#)

T (Extent of Primary Tumor):

Other Tumor Stage

N (Lymph node metastasis):

N1

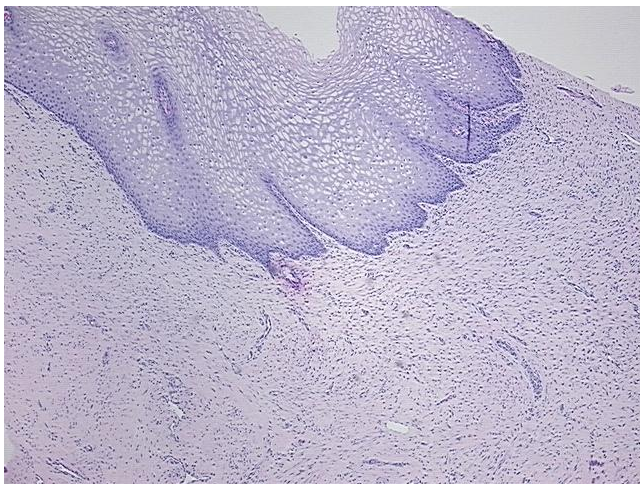
Storage:

Store FFPE tissue sections at +4°C.

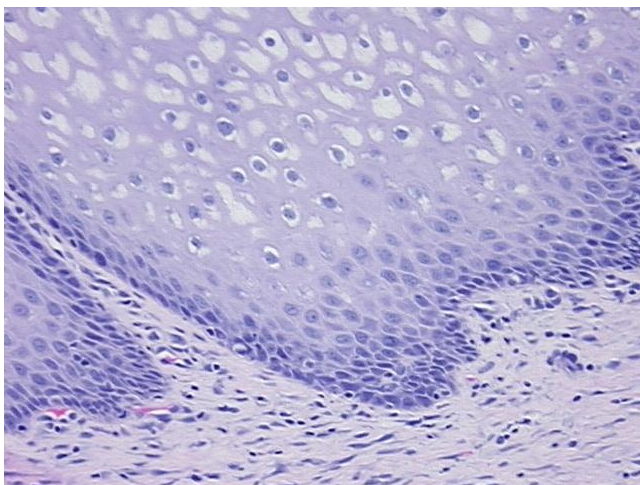
Stability:

All FFPE tissue sections are stable for 1 year from date of purchase.

### Product images:



4x Image



20x Image