

Product datasheet for CS808165

Tissue FFPE Sections, Lung

Product data:

Product Type:	FFPE Sections
Disease State:	Other Disease
Diagnosis Category:	Inflammation (various)
Tissue:	Lung
Frozen Sample ID:	PA000062B3
Case ID:	CU0000006517
Tissue of Origin:	Lung
Site of Finding:	Lung
Appearance:	L
Sample Diagnosis (from Pathology Verification):	Pneumonitis, chronic
Normal:	0%
Lesional:	100%
Tumor:	0%
Tumor Hypo/Acellular Stroma:	0%
Tumor Hypercellular Stroma:	0%
Necrosis:	0%
Pathology Verification notes from H&E review:	lesion: extensive chronic pneumonitis with foci of bronchiolitis obliterans-organizing pneumonia (BOOP) with no residual normal lung architecture
CASE Diagnosis (from medical center path report):	Pneumonitis, chronic
Age:	47
Gender:	Female



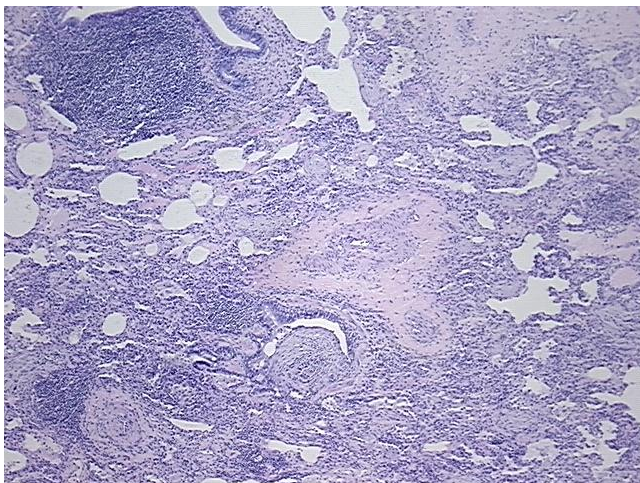
[View online »](#)

Diagnostic Test Results: GMS ~ Grocott methenamine silver stain,Negative; S100 protein,Negative; CD1a ~ Leu6 ! by IHC,Negative; CD68 ~ KP1 ! by IHC,Negative

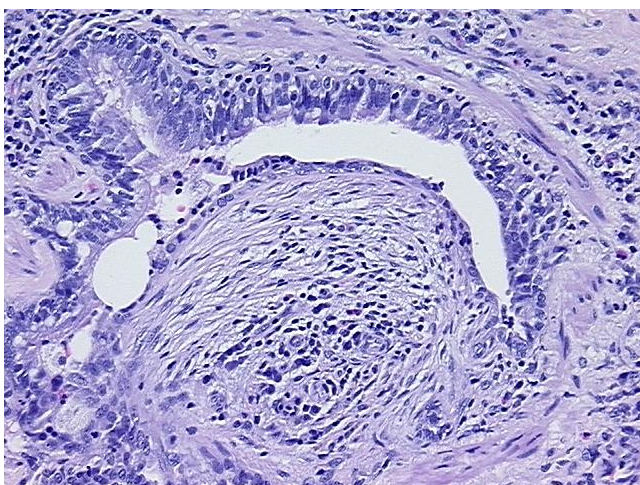
Storage: Store FFPE tissue sections at +4°C.

Stability: All FFPE tissue sections are stable for 1 year from date of purchase.

Product images:



4x Image



20x Image