

## Product datasheet for **CS807995**

### Tissue FFPE Sections, Lung

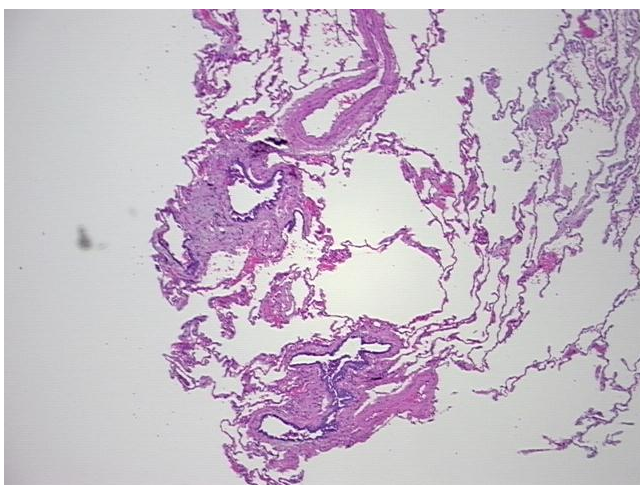
#### Product data:

Product Type:	FFPE Sections
Disease State:	Other Disease
Diagnosis Category:	Chronic Obstructive Pulmonary Disease (COPD)
Tissue:	Lung
Frozen Sample ID:	PA00007032
Case ID:	CU0000006412
Tissue of Origin:	Lung
Site of Finding:	Lung
Appearance:	L
Sample Diagnosis (from Pathology Verification):	Emphysematous changes
Normal:	0%
Lesional:	100%
Tumor:	0%
Tumor Hypo/Acellular Stroma:	0%
Tumor Hypercellular Stroma:	0%
Necrosis:	0%
Pathology Verification notes from H&E review:	Non Tumor Structures: 60% Alveoli, 5% Bronchioles, 35% Fibrovascular septa
CASE Diagnosis (from medical center path report):	Adenocarcinoma of breast, ductal, metastatic
Age:	75
Gender:	Female
Tumor Grade:	Not Reported

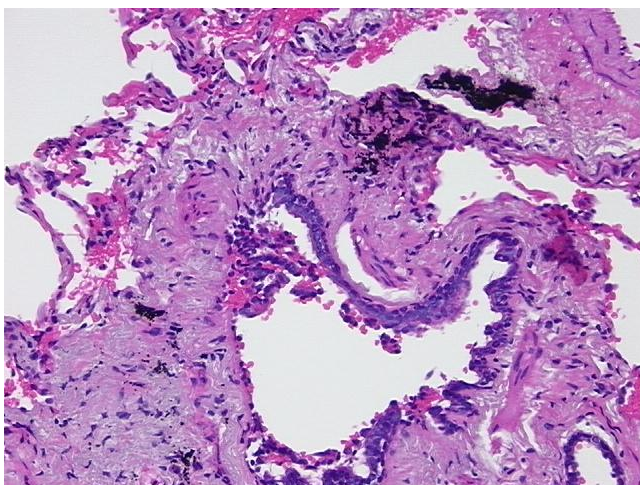


[View online »](#)

Minimum Stage Grouping:	IV
T (Extent of Primary Tumor):	TX
N (Lymph node metastasis):	NX
M (Distant metastasis):	M1
Diagnostic Test Results:	CD66e ~ CEACAM5 ! by IHC,Positive; Prolactin-induced protein ~ PIP ~ GCDFP15 ! by IHC,Positive; Thyroid transcription factor 1 ~ TTF1 ! by IHC,Negative; p63 ~ p53 homolog ! by IHC,Negative
Storage:	Store FFPE tissue sections at +4°C.
Stability:	All FFPE tissue sections are stable for 1 year from date of purchase.

**Product images:**

4x Image



20x Image