

Product datasheet for **CS807983**

Tissue FFPE Sections, Breast

Product data:

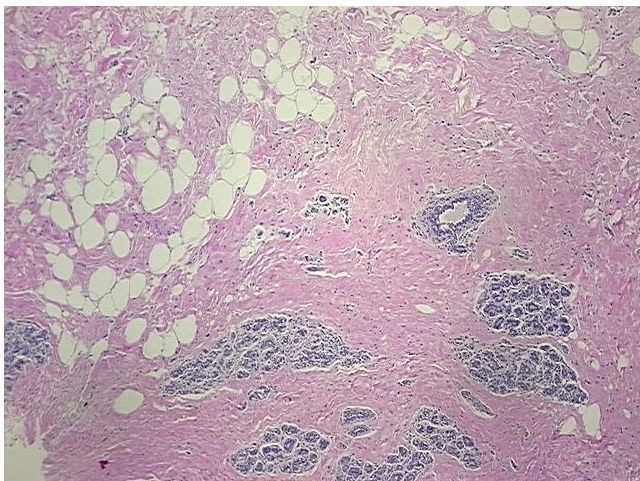
| | |
|---------------------------------------------------|--------------------------------------------------------------------------------|
| Product Type: | FFPE Sections |
| Disease State: | Other Disease |
| Diagnosis Category: | Fibrosis |
| Tissue: | Breast |
| Frozen Sample ID: | PA00007010 |
| Case ID: | CU0000006406 |
| Tissue of Origin: | Breast |
| Site of Finding: | Breast |
| Appearance: | L |
| Sample Diagnosis (from Pathology Verification): | Fibrosis |
| Normal: | 0% |
| Lesional: | 100% |
| Tumor: | 0% |
| Tumor Hypo/Acellular Stroma: | 0% |
| Tumor Hypercellular Stroma: | 0% |
| Necrosis: | 0% |
| Pathology Verification notes from H&E review: | Non Tumor Structures: 30% Glandular epithelium, 60% Stroma, 10% Adipose tissue |
| CASE Diagnosis (from medical center path report): | Fibrosis |
| Age: | 26 |
| Gender: | Female |
| Storage: | Store FFPE tissue sections at +4°C. |



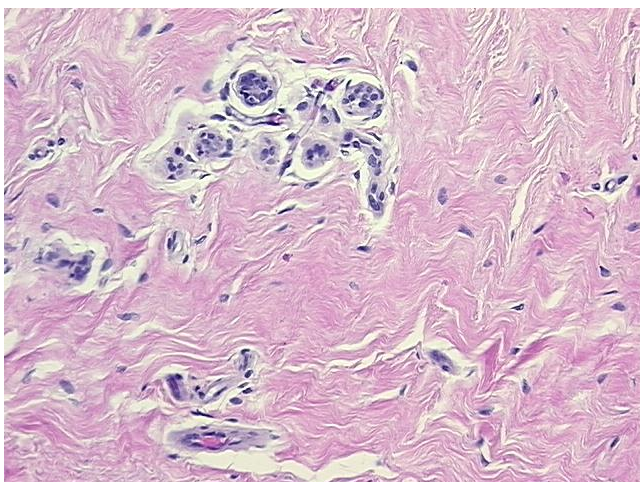
[View online »](#)

Stability: All FFPE tissue sections are stable for 1 year from date of purchase.

Product images:



4x Image



20x Image