

## Product datasheet for **CS807959**

### Tissue FFPE Sections, Stomach

#### Product data:

Product Type:	FFPE Sections
Disease State:	Other Disease
Diagnosis Category:	Gastrointestinal Stromal Tumor (GIST)
Tissue:	Stomach
Frozen Sample ID:	PA15477CF3
Case ID:	CU0000006386
Tissue of Origin:	Stomach
Site of Finding:	Stomach
Appearance:	T
Sample Diagnosis (from Pathology Verification):	Gastrointestinal stromal tumor of stomach
Normal:	0%
Lesional:	0%
Tumor:	95%
Tumor Hypo/Acellular Stroma:	5%
Tumor Hypercellular Stroma:	0%
Necrosis:	0%
CASE Diagnosis (from medical center path report):	Gastrointestinal stromal tumor of stomach
Age:	69
Gender:	Male
Tumor Grade:	Not Reported
Minimum Stage Grouping:	Not Reported



[View online »](#)

T (Extent of Primary Tumor): Not Reported

N (Lymph node metastasis): Not Reported

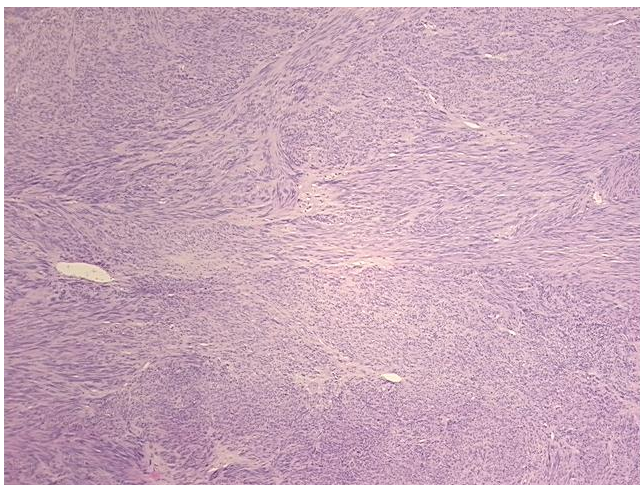
M (Distant metastasis): Not Reported

Diagnostic Test Results: S100 protein,Negative; Desmin ! by IHC,Negative; MSA ~ Muscle Specific Actin,Negative; CD117 ~ C-kit ~ SCFR ! by IHC,Positive

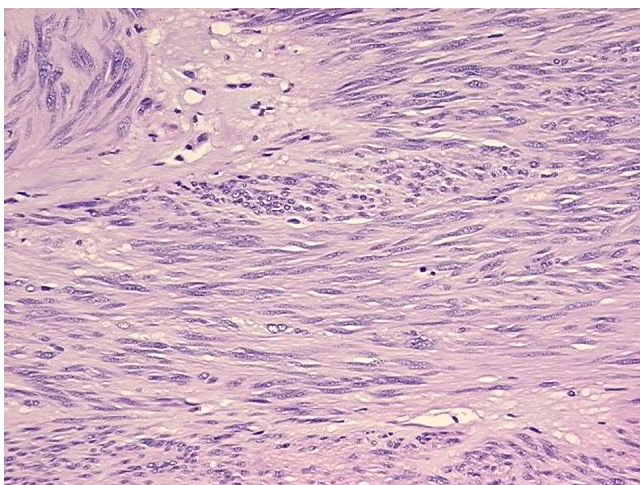
Storage: Store FFPE tissue sections at +4°C.

Stability: All FFPE tissue sections are stable for 1 year from date of purchase.

### Product images:



4x Image



20x Image