

Product datasheet for **CS807934**

Tissue FFPE Sections, Intervertebral disc

Product data:

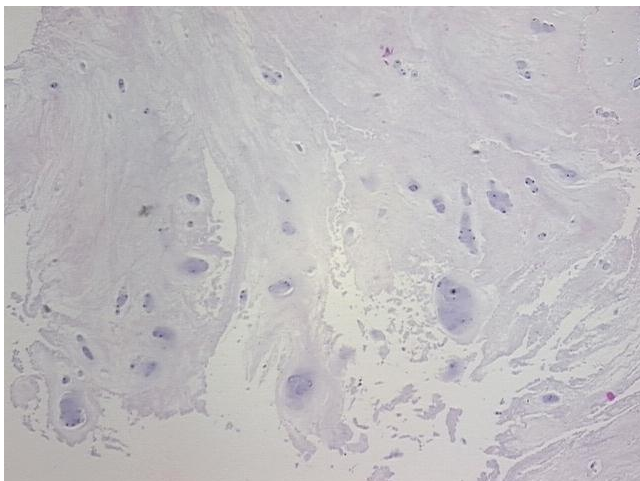
Product Type:	FFPE Sections
Disease State:	Normal
Diagnosis Category:	Normal
Tissue:	Intervertebral disc
Frozen Sample ID:	PA00006ACF
Case ID:	CU0000006366
Tissue of Origin:	Intervertebral disc
Site of Finding:	Intervertebral disc
Appearance:	R
Sample Diagnosis (from Pathology Verification):	Within normal limits
Normal:	100%
Lesional:	0%
Tumor:	0%
Tumor Hypo/Acellular Stroma:	0%
Tumor Hypercellular Stroma:	0%
Necrosis:	0%
Pathology Verification notes from H&E review:	Non Tumor Structures: 20% Chondrocytes, 80% Matrix
CASE Diagnosis (from medical center path report):	Intervertebral disc disorders
Age:	32
Gender:	Female
Storage:	Store FFPE tissue sections at +4°C.



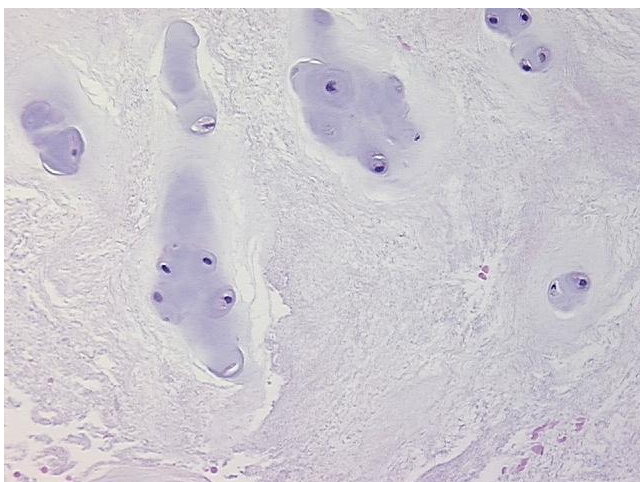
[View online »](#)

Stability: All FFPE tissue sections are stable for 1 year from date of purchase.

Product images:



4x Image



20x Image