

Product datasheet for **CS807850**

Tissue FFPE Sections, Breast

Product data:

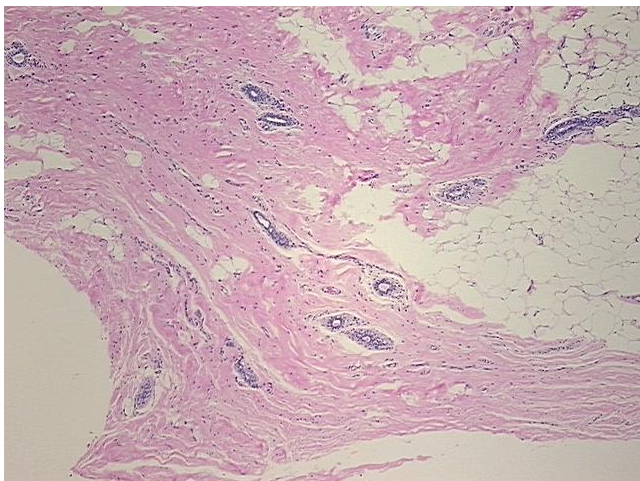
Product Type:	FFPE Sections
Disease State:	Normal
Diagnosis Category:	Normal
Tissue:	Breast
Frozen Sample ID:	PA0F3345AF
Case ID:	CU0000006309
Tissue of Origin:	Breast
Site of Finding:	Breast
Appearance:	R
Sample Diagnosis (from Pathology Verification):	Within normal limits
Normal:	100%
Lesional:	0%
Tumor:	0%
Tumor Hypo/Acellular Stroma:	0%
Tumor Hypercellular Stroma:	0%
Necrosis:	0%
Pathology Verification notes from H&E review:	15% glandular epithelium, 45% stroma, 40% adipose tissue
CASE Diagnosis (from medical center path report):	Ductal hyperplasia of breast
Age:	47
Gender:	Female
Storage:	Store FFPE tissue sections at +4°C.



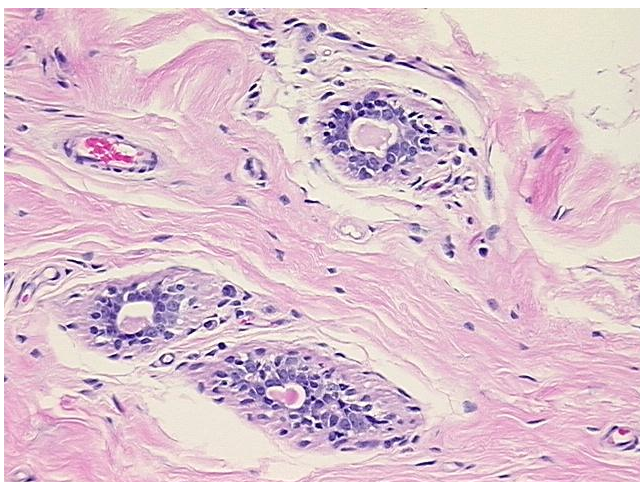
[View online »](#)

Stability: All FFPE tissue sections are stable for 1 year from date of purchase.

Product images:



4x Image



20x Image