

Product datasheet for **CS807787**

Tissue FFPE Sections, Gastroesophageal junction

Product data:

Product Type:	FFPE Sections
Disease State:	Cancer
Diagnosis Category:	Esophageal/Gastroesophageal Cancer
Tissue:	Gastroesophageal junction
Frozen Sample ID:	PA000061D4
Case ID:	CU0000006298
Tissue of Origin:	Gastroesophageal junction
Site of Finding:	Gastroesophageal junction
Appearance:	T
Sample Diagnosis (from Pathology Verification):	Adenocarcinoma of gastroesophageal junction
Normal:	0%
Lesional:	0%
Tumor:	35%
Tumor Hypo/Acellular Stroma:	0%
Tumor Hypercellular Stroma:	65%
Necrosis:	0%
CASE Diagnosis (from medical center path report):	Adenocarcinoma of gastroesophageal junction
Age:	71
Gender:	Male
Tumor Grade:	AJCC G4: Undifferentiated
Minimum Stage Grouping:	III



[View online »](#)

T (Extent of Primary Tumor): T3

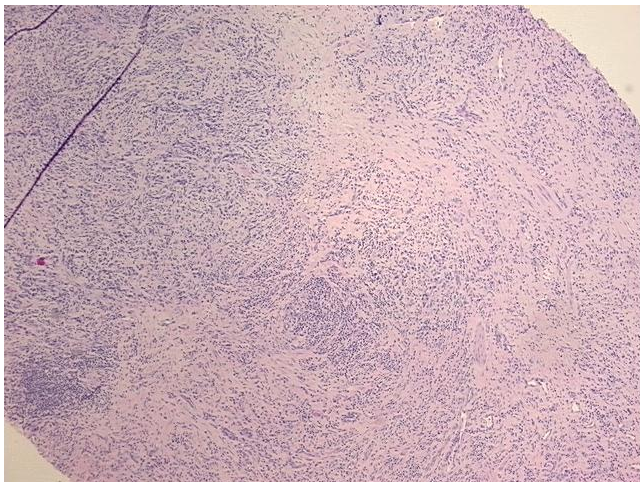
N (Lymph node metastasis): N1

M (Distant metastasis): MX

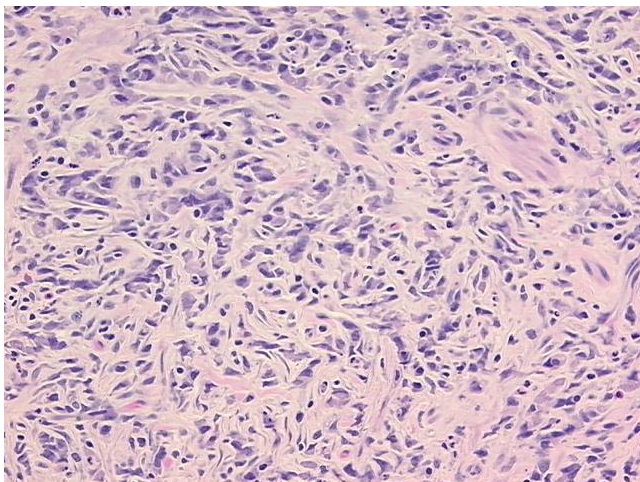
Storage: Store FFPE tissue sections at +4°C.

Stability: All FFPE tissue sections are stable for 1 year from date of purchase.

Product images:



4x Image



20x Image