

Product datasheet for **CS807773**

Tissue FFPE Sections, Kidney

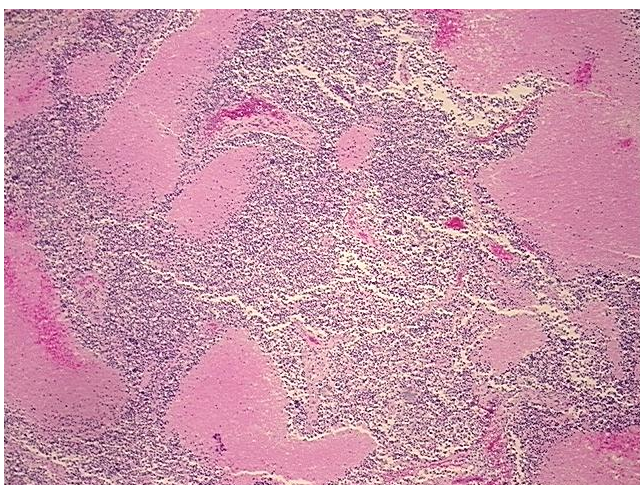
Product data:

Product Type:	FFPE Sections
Disease State:	Cancer
Diagnosis Category:	Renal Cell Carcinoma
Tissue:	Kidney
Frozen Sample ID:	PA15477869
Case ID:	CU0000006295
Tissue of Origin:	Kidney
Site of Finding:	Kidney
Appearance:	T
Sample Diagnosis (from Pathology Verification):	Carcinoma of kidney, small cell
Normal:	0%
Lesional:	0%
Tumor:	75%
Tumor Hypo/Acellular Stroma:	0%
Tumor Hypercellular Stroma:	0%
Necrosis:	25%
Pathology Verification notes from H&E review:	high grade malignant small cell neoplasm
CASE Diagnosis (from medical center path report):	Carcinoma of kidney, small cell
Age:	78
Gender:	Female
Tumor Grade:	Other Histologic Grade

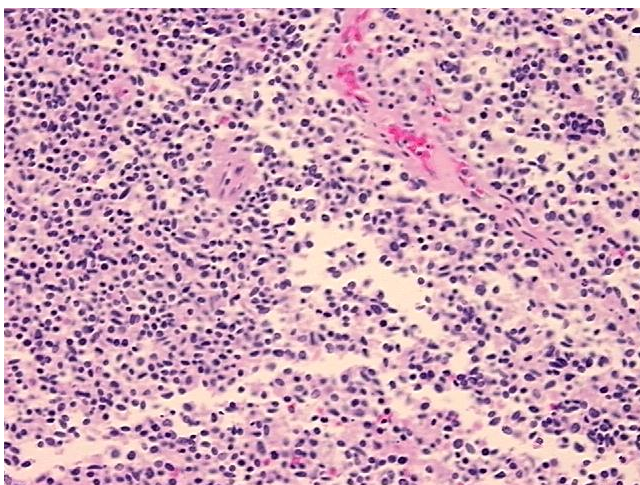


[View online »](#)

Minimum Stage Grouping:	III
T (Extent of Primary Tumor):	T3a
N (Lymph node metastasis):	N1
M (Distant metastasis):	MX
Diagnostic Test Results:	CD227 ~ MUC1 ~ EMA ~ CA15-3 ! by IHC,Negative; Neuron specific enolase ~ NSE ! by IHC,Positive; MART-1 ~ Melanoma Marker ~ Melan-A,Negative; HMB45 melanoma antigen ~ GP100 ! by IHC,Negative; S100 protein,Negative; Synaptophysin ~ SYN ! by
Storage:	Store FFPE tissue sections at +4°C.
Stability:	All FFPE tissue sections are stable for 1 year from date of purchase.

Product images:

4x Image



20x Image