

Product datasheet for **CS807758**

Tissue FFPE Sections, Brain

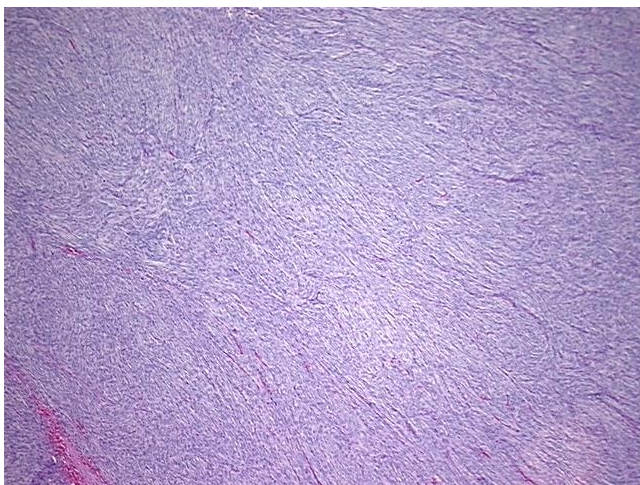
Product data:

Product Type:	FFPE Sections
Disease State:	Other Disease
Diagnosis Category:	Meningioma
Tissue:	Brain
Frozen Sample ID:	PA15477D6F
Case ID:	CU0000006290
Tissue of Origin:	Brain
Site of Finding:	Brain
Appearance:	T
Sample Diagnosis (from Pathology Verification):	Meningioma, atypical, recurrent
Normal:	0%
Lesional:	0%
Tumor:	98%
Tumor Hypo/Acellular Stroma:	0%
Tumor Hypercellular Stroma:	2%
Necrosis:	0%
Pathology Verification notes from H&E review:	Tumor: previous is meningothelial type (benign)
CASE Diagnosis (from medical center path report):	Meningioma, atypical, recurrent
Age:	60
Gender:	Female
Tumor Grade:	WHO Grade II

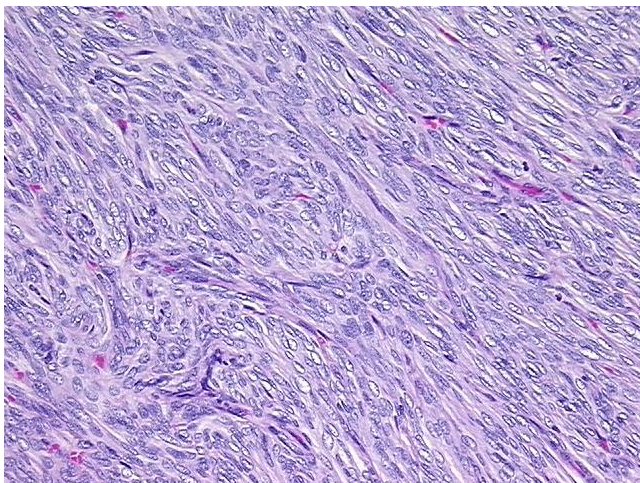


[View online »](#)

Minimum Stage Grouping:	Not Reported
T (Extent of Primary Tumor):	Not Reported
N (Lymph node metastasis):	Not Reported
M (Distant metastasis):	Not Reported
Storage:	Store FFPE tissue sections at +4°C.
Stability:	All FFPE tissue sections are stable for 1 year from date of purchase.

Product images:

4x Image



20x Image