

Product datasheet for **CS807720**

Tissue FFPE Sections, Renal pelvis

Product data:

| | |
|---|--|
| Product Type: | FFPE Sections |
| Disease State: | Cancer |
| Diagnosis Category: | Renal Pelvis Cancer |
| Tissue: | Renal pelvis |
| Frozen Sample ID: | PA00005D68 |
| Case ID: | CU0000006277 |
| Tissue of Origin: | Renal pelvis |
| Site of Finding: | Renal pelvis |
| Appearance: | T |
| Sample Diagnosis (from Pathology Verification): | Carcinoma of renal pelvis, transitional cell |
| Normal: | 0% |
| Lesional: | 0% |
| Tumor: | 80% |
| Tumor Hypo/Acellular Stroma: | 10% |
| Tumor Hypercellular Stroma: | 10% |
| Necrosis: | 0% |
| CASE Diagnosis (from medical center path report): | Carcinoma of renal pelvis, transitional cell |
| Age: | 52 |
| Gender: | Male |
| Tumor Grade: | Fuhrman G2: Nuclei slightly irregular |
| Minimum Stage Grouping: | III |



[View online »](#)

T (Extent of Primary Tumor): T3

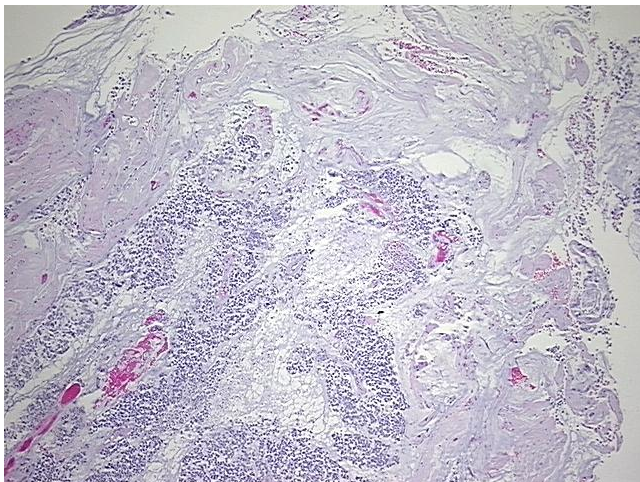
N (Lymph node metastasis): NX

M (Distant metastasis): MX

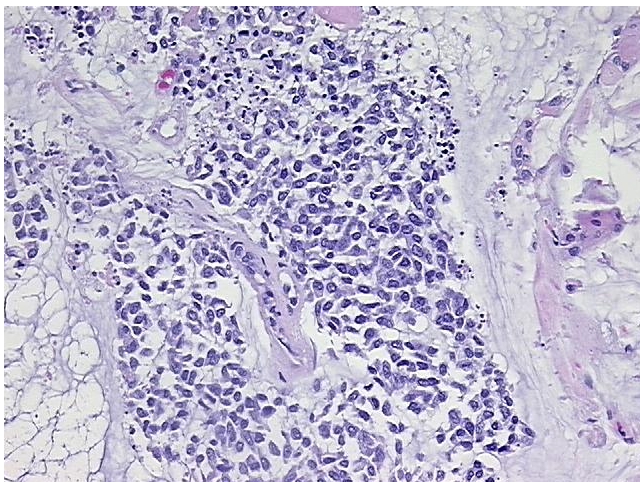
Storage: Store FFPE tissue sections at +4°C.

Stability: All FFPE tissue sections are stable for 1 year from date of purchase.

Product images:



4x Image



20x Image