

Product datasheet for **CS807523**

Tissue FFPE Sections, Colon: right

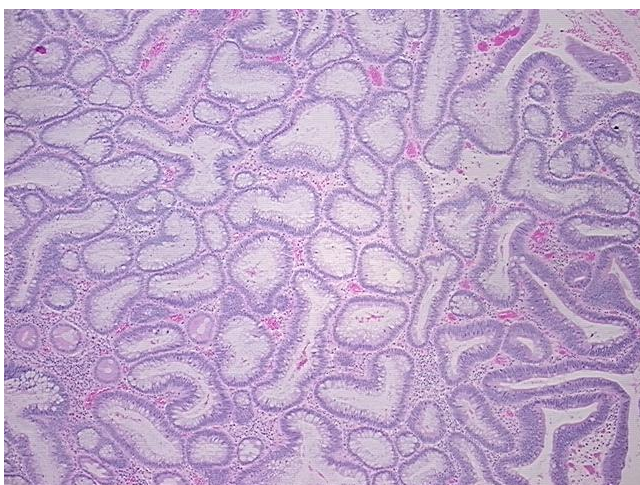
Product data:

Product Type:	FFPE Sections
Disease State:	Other Disease
Diagnosis Category:	Benign Tumors
Tissue:	Colon
Frozen Sample ID:	PA0F335479
Case ID:	CU0000006232
Tissue of Origin:	Colon: right
Site of Finding:	Colon: right
Appearance:	T
Sample Diagnosis (from Pathology Verification):	Adenoma of colon
Normal:	15%
Lesional:	0%
Tumor:	70%
Tumor Hypo/Acellular Stroma:	0%
Tumor Hypercellular Stroma:	15%
Necrosis:	0%
Pathology Verification notes from H&E review:	Tumor Stroma (Cellular): Desmoplastic reaction; Non Tumor Structures: 70% Submucosa, 30% Muscle
CASE Diagnosis (from medical center path report):	Adenocarcinoma of colon
Age:	62
Gender:	Female
Tumor Grade:	AJCC G1: Well differentiated

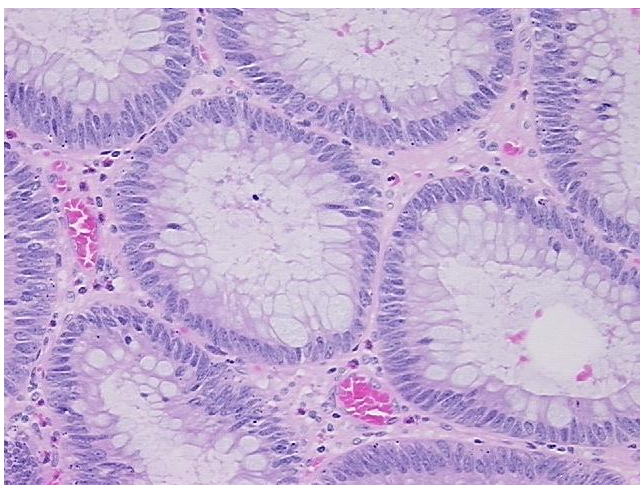

[View online »](#)

Minimum Stage Grouping:	I
T (Extent of Primary Tumor):	T1
N (Lymph node metastasis):	N0
M (Distant metastasis):	MX
Storage:	Store FFPE tissue sections at +4°C.
Stability:	All FFPE tissue sections are stable for 1 year from date of purchase.

Product images:



4x Image



20x Image