

## Product datasheet for **CS807398**

### Tissue FFPE Sections, Artery: peripheral

#### Product data:

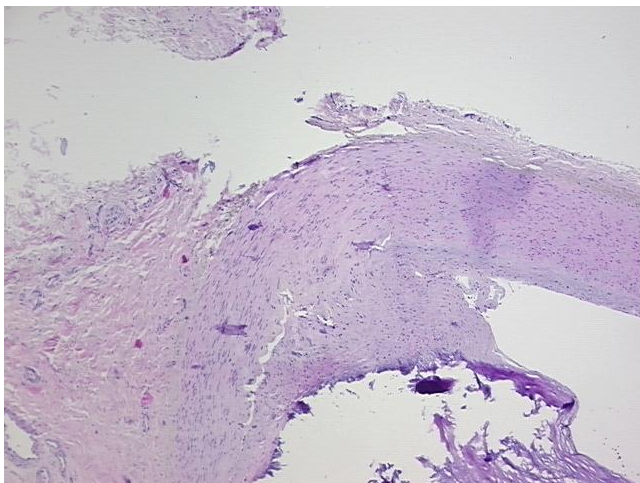
|   |  |
|---|--|
| Product Type:                                     | FFPE Sections                          |
| Disease State:                                    | Other Disease                          |
| Diagnosis Category:                               | Atherosclerosis                        |
| Tissue:   | Artery                                 |
| Frozen Sample ID:                                 | PA0000604B                             |
| Case ID:  | CU0000006206                           |
| Tissue of Origin:                                 | Artery: peripheral                     |
| Site of Finding:                                  | Artery: peripheral                     |
| Appearance:                                       | L                                      |
| Sample Diagnosis (from Pathology Verification):   | Atherosclerosis                        |
| Normal:   | 0%                                     |
| Lesional:   | 100%                                   |
| Tumor:  | 0%                                     |
| Tumor Hypo/Acellular Stroma:                      | 0%                                     |
| Tumor Hypercellular Stroma:                       | 0%                                     |
| Necrosis:   | 0%                                     |
| Pathology Verification notes from H&E review:     | 70% vessel, 30% atherosclerotic debris |
| CASE Diagnosis (from medical center path report): | Atherosclerosis                        |
| Age:  | 66                                     |
| Gender:   | Female                                 |
| Storage:  | Store FFPE tissue sections at +4°C.    |



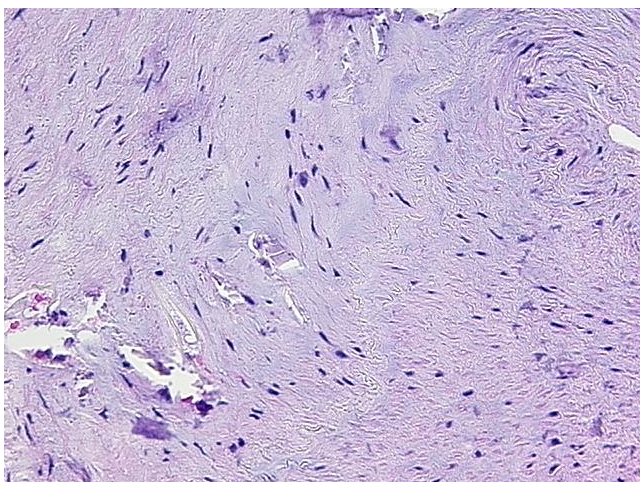
[View online »](#)

Stability: All FFPE tissue sections are stable for 1 year from date of purchase.

**Product images:**



4x Image



20x Image