

## Product datasheet for **CS807395**

### Tissue FFPE Sections, Breast

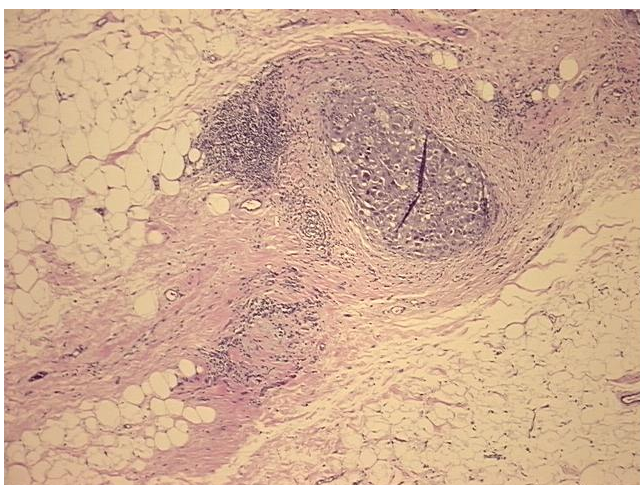
#### Product data:

Product Type:	FFPE Sections
Disease State:	Cancer
Diagnosis Category:	Breast Cancer
Tissue:	Breast
Frozen Sample ID:	PA00006042
Case ID:	CU0000006204
Tissue of Origin:	Breast
Site of Finding:	Breast
Appearance:	T
Sample Diagnosis (from Pathology Verification):	Carcinoma in situ of breast, ductal, solid
Normal:	90%
Lesional:	0%
Tumor:	10%
Tumor Hypo/Acellular Stroma:	0%
Tumor Hypercellular Stroma:	0%
Necrosis:	0%
Pathology Verification notes from H&E review:	Non Tumor Structures: 15% Glandular epithelium, 60% Stroma, 25% Adipose tissue
CASE Diagnosis (from medical center path report):	Adenocarcinoma of breast, ductal
Age:	56
Gender:	Female
Tumor Grade:	Nottingham G3: 8-9 points High combined grade (unfavorable)

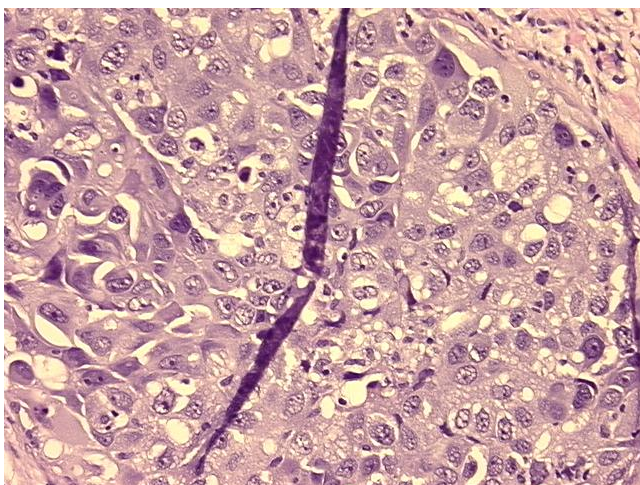


[View online »](#)

Minimum Stage Grouping:	I
T (Extent of Primary Tumor):	T1a
N (Lymph node metastasis):	NX
M (Distant metastasis):	MX
Storage:	Store FFPE tissue sections at +4°C.
Stability:	All FFPE tissue sections are stable for 1 year from date of purchase.

**Product images:**

4x Image



20x Image