

## Product datasheet for **CS807393**

### Tissue FFPE Sections, Breast

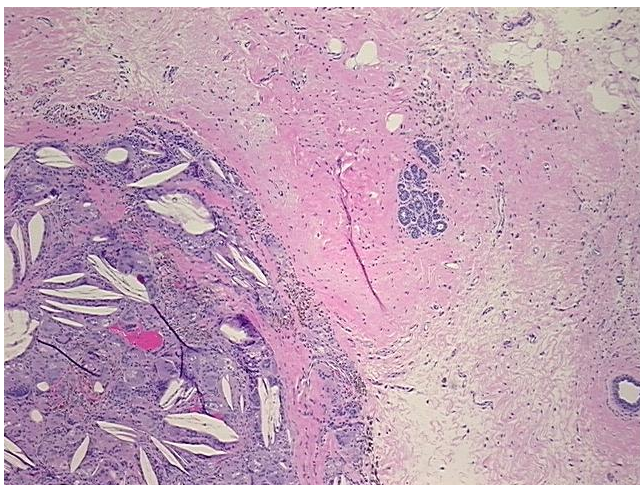
#### Product data:

|   |  |
|---|--|
| Product Type:                                     | FFPE Sections  |
| Disease State:                                    | Other Disease  |
| Diagnosis Category:                               | Foreign Body Reaction  |
| Tissue:   | Breast   |
| Frozen Sample ID:                                 | PA00006040   |
| Case ID:  | CU0000006204   |
| Tissue of Origin:                                 | Breast   |
| Site of Finding:                                  | Breast   |
| Appearance:                                       | L  |
| Sample Diagnosis (from Pathology Verification):   | Foreign body reaction  |
| Normal:   | 90%  |
| Lesional:   | 10%  |
| Tumor:  | 0%   |
| Tumor Hypo/Acellular Stroma:                      | 0%   |
| Tumor Hypercellular Stroma:                       | 0%   |
| Necrosis:   | 0%   |
| Pathology Verification notes from H&E review:     | normal: 20% glandular epithelium, 25% stroma, 55% adipose tissue |
| CASE Diagnosis (from medical center path report): | Adenocarcinoma of breast, ductal                                 |
| Age:  | 56   |
| Gender:   | Female   |
| Tumor Grade:                                      | Nottingham G3: 8-9 points High combined grade (unfavorable)      |

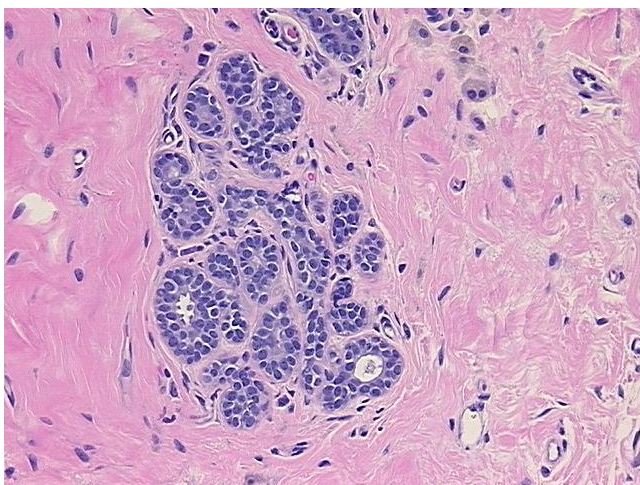


[View online »](#)

|                              |   |
|------------------------------|---|
| Minimum Stage Grouping:      | I   |
| T (Extent of Primary Tumor): | T1a   |
| N (Lymph node metastasis):   | NX  |
| M (Distant metastasis):      | MX  |
| Storage:                     | Store FFPE tissue sections at +4°C.                                   |
| Stability:                   | All FFPE tissue sections are stable for 1 year from date of purchase. |

**Product images:**

4x Image



20x Image