

Product datasheet for **CS807388**

Tissue FFPE Sections, Breast

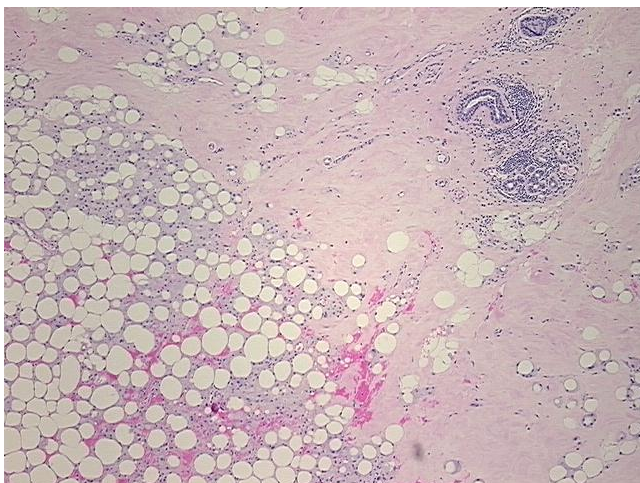
Product data:

Product Type:	FFPE Sections
Disease State:	Other Disease
Diagnosis Category:	Necrosis
Tissue:	Breast
Frozen Sample ID:	PA00006037
Case ID:	CU0000006202
Tissue of Origin:	Breast
Site of Finding:	Breast
Appearance:	L
Sample Diagnosis (from Pathology Verification):	Fat necrosis
Normal:	70%
Lesional:	30%
Tumor:	0%
Tumor Hypo/Acellular Stroma:	0%
Tumor Hypercellular Stroma:	0%
Necrosis:	0%
Pathology Verification notes from H&E review:	normal: 10% glandular epithelium, 45% stroma, 45% adipose tissue
CASE Diagnosis (from medical center path report):	Adenocarcinoma of breast, ductal, lobular
Age:	74
Gender:	Female
Tumor Grade:	Nottingham G3: 8-9 points High combined grade (unfavorable)

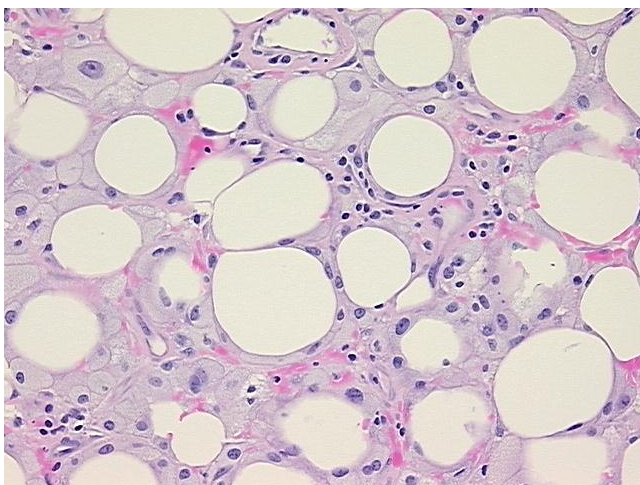


[View online »](#)

Minimum Stage Grouping:	I
T (Extent of Primary Tumor):	TX
N (Lymph node metastasis):	NX
M (Distant metastasis):	MX
Storage:	Store FFPE tissue sections at +4°C.
Stability:	All FFPE tissue sections are stable for 1 year from date of purchase.

Product images:

4x Image



20x Image