

Product datasheet for **CS807347**

Tissue FFPE Sections, Colon

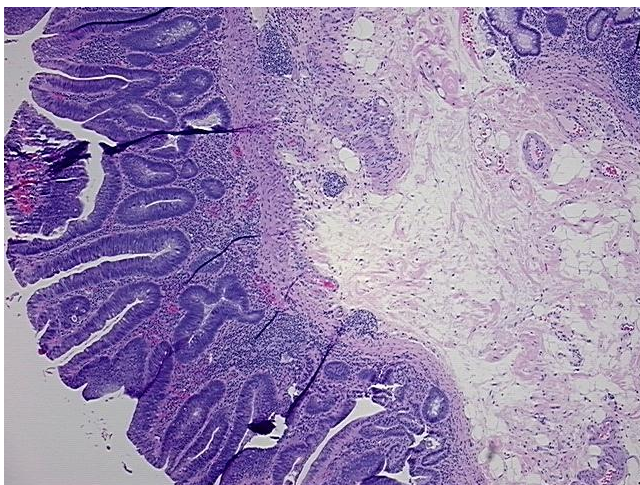
Product data:

| | |
|---|------------------------|
| Product Type: | FFPE Sections |
| Disease State: | Other Disease |
| Diagnosis Category: | Benign Tumors |
| Tissue: | Colon |
| Frozen Sample ID: | PA000051C5 |
| Case ID: | CU0000006189 |
| Tissue of Origin: | Colon |
| Site of Finding: | Colon |
| Appearance: | T |
| Sample Diagnosis (from Pathology Verification): | Adenoma of colon |
| Normal: | 50% |
| Lesional: | 0% |
| Tumor: | 40% |
| Tumor Hypo/Acellular Stroma: | 0% |
| Tumor Hypercellular Stroma: | 10% |
| Necrosis: | 0% |
| Pathology Verification notes from H&E review: | Normal: 100% submucosa |
| CASE Diagnosis (from medical center path report): | Adenoma of colon |
| Age: | 68 |
| Gender: | Female |
| Tumor Grade: | Not Reported |

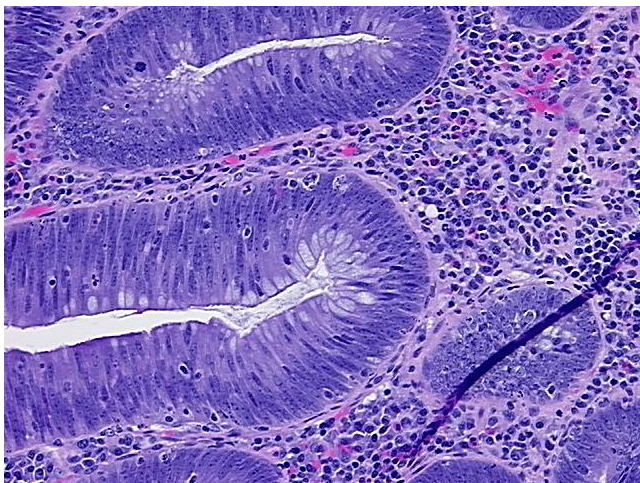


[View online »](#)

| | |
|------------------------------|---|
| Minimum Stage Grouping: | Not Reported |
| T (Extent of Primary Tumor): | Not Reported |
| N (Lymph node metastasis): | Not Reported |
| M (Distant metastasis): | Not Reported |
| Storage: | Store FFPE tissue sections at +4°C. |
| Stability: | All FFPE tissue sections are stable for 1 year from date of purchase. |

Product images:

4x Image



20x Image