

Product datasheet for **CS807267**

Tissue FFPE Sections, Lymphoid tissue

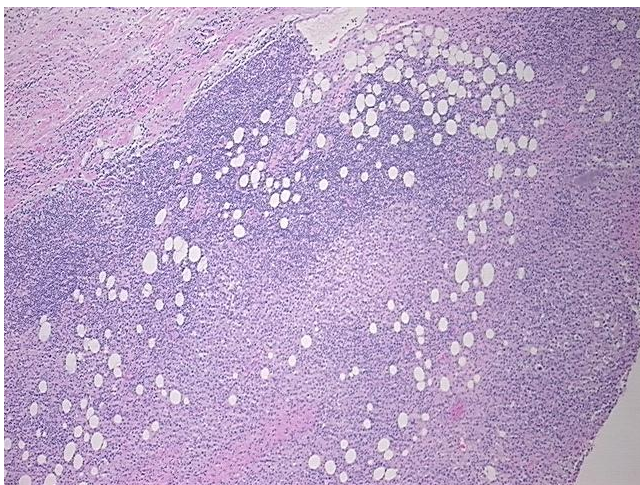
Product data:

Product Type:	FFPE Sections
Disease State:	Cancer
Diagnosis Category:	Lymphoma
Tissue:	Lymphoid tissue
Frozen Sample ID:	PA0F33466F
Case ID:	CU0000006168
Tissue of Origin:	Lymphoid tissue
Site of Finding:	Thymus
Appearance:	T
Sample Diagnosis (from Pathology Verification):	Lymphoma, large B-cell, mediastinal (thymic)
Normal:	20%
Lesional:	0%
Tumor:	25%
Tumor Hypo/Acellular Stroma:	35%
Tumor Hypercellular Stroma:	20%
Necrosis:	0%
Pathology Verification notes from H&E review:	Mediastinal (thymic) large B-cell lymphoma with sclerosis
CASE Diagnosis (from medical center path report):	Lymphoma, large B-cell, diffuse
Age:	45
Gender:	Female
Tumor Grade:	Not Reported

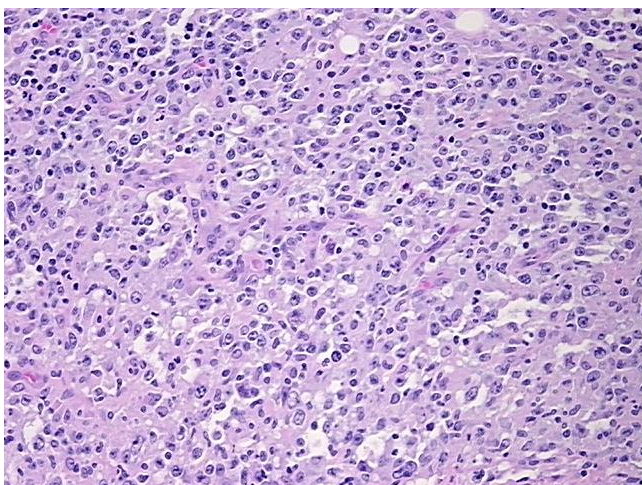


[View online »](#)

Minimum Stage Grouping:	II
T (Extent of Primary Tumor):	Not applicable
N (Lymph node metastasis):	Not applicable
M (Distant metastasis):	Not applicable
Diagnostic Test Results:	CD45RO ~ A6 ~ UCHL1 ! by IHC,Positive; MART-1 ~ Melanoma Marker ~ Melan-A,Negative; HMB45 melanoma antigen ~ GP100 ! by IHC,Negative; S100 protein,Negative; CD45 ~ Leukocyte common antigen ! by IHC,Positive; Cytokeratin CAM5.2 ~ CAM5.2 ! by
Storage:	Store FFPE tissue sections at +4°C.
Stability:	All FFPE tissue sections are stable for 1 year from date of purchase.

Product images:

4x Image



20x Image