

## Product datasheet for **CS807254**

### Tissue FFPE Sections, Breast

#### Product data:

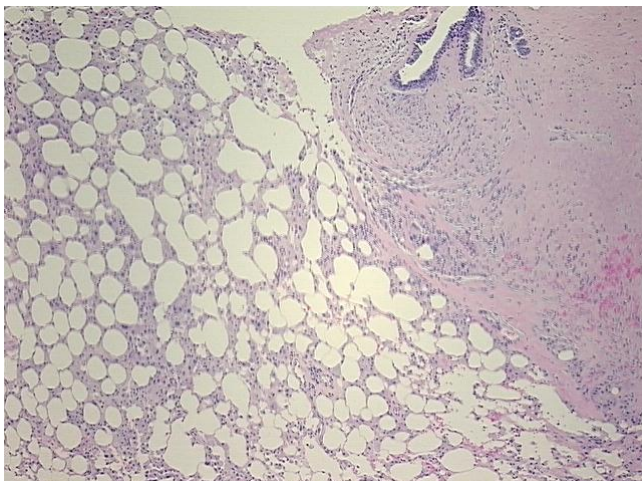
Product Type:	FFPE Sections
Disease State:	Other Disease
Diagnosis Category:	Foreign Body Reaction
Tissue:	Breast
Frozen Sample ID:	PA0000513E
Case ID:	CU0000006165
Tissue of Origin:	Breast
Site of Finding:	Breast
Appearance:	L
Sample Diagnosis (from Pathology Verification):	Foreign body reaction
Normal:	40%
Lesional:	60%
Tumor:	0%
Tumor Hypo/Acellular Stroma:	0%
Tumor Hypercellular Stroma:	0%
Necrosis:	0%
Pathology Verification notes from H&E review:	lesion: 60% foreign body giant cells and foamy histocytes, 40% adipose tissue with fat necrosis
CASE Diagnosis (from medical center path report):	Ductal hyperplasia of breast
Age:	50
Gender:	Female
Storage:	Store FFPE tissue sections at +4°C.



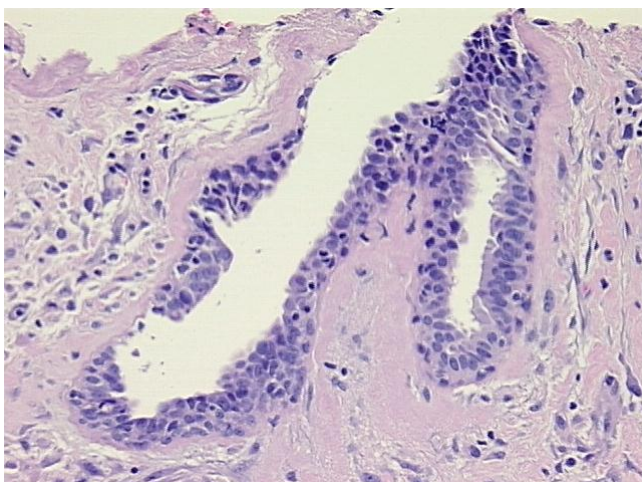
[View online »](#)

Stability: All FFPE tissue sections are stable for 1 year from date of purchase.

**Product images:**



4x Image



20x Image